

MERIT BADGE SERIES



REPTILE AND AMPHIBIAN STUDY



BOY SCOUTS OF AMERICA®

HOW TO USE THIS PAMPHLET

The secret to successfully earning a merit badge is for you to use both the pamphlet and the suggestions of your counselor.

Your counselor can be as important to you as a coach is to an athlete. Use all of the resources your counselor can make available to you. This may be the best chance you will have to learn about this particular subject. Make it count.

If you or your counselor feels that any information in this pamphlet is incorrect, please let us know. Please state your source of information.

Merit badge pamphlets are reprinted annually and requirements updated regularly. Your suggestions for improvement are welcome.

Send comments along with a brief statement about yourself to Youth Development, S209 • Boy Scouts of America • 1325 West Walnut Hill Lane • P.O. Box 152079 • Irving, TX 75015-2079.

WHO PAYS FOR THIS PAMPHLET?

This merit badge pamphlet is one in a series of more than 100 covering all kinds of hobby and career subjects. It is made available for you to buy as a service of the national and local councils, Boy Scouts of America. The costs of the development, writing, and editing of the merit badge pamphlets are paid for by the Boy Scouts of America in order to bring you the best book at a reasonable price.



BOY SCOUTS OF AMERICA
MERIT BADGE SERIES

REPTILE AND AMPHIBIAN STUDY



BOY SCOUTS OF AMERICA.

Requirements

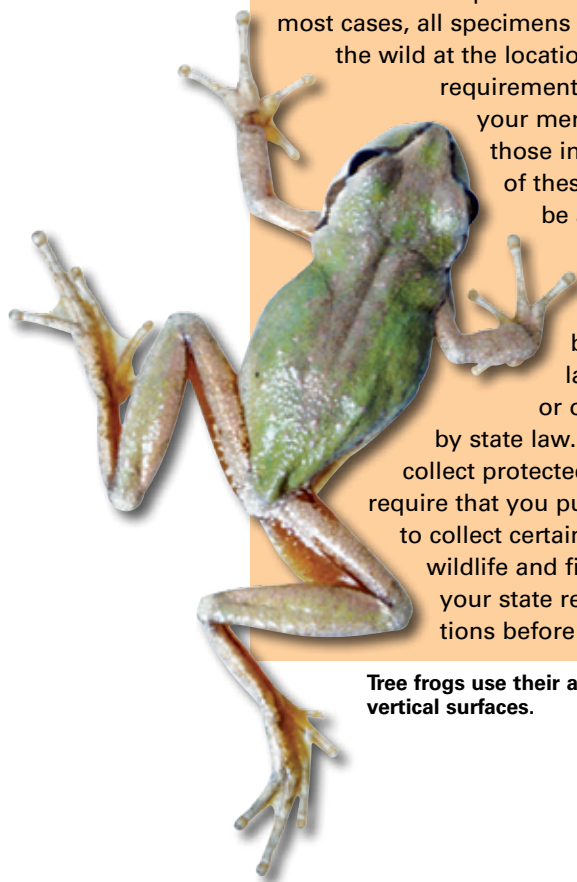
1. Describe the identifying characteristics of six species of reptiles and four species of amphibians found in the United States. For any four of these, make sketches from your own observations or take photographs. Show markings, color patterns, or other characteristics that are important in the identification of each of the four species. Discuss the habits and habitats of all 10 species.
2. Discuss with your merit badge counselor the approximate number of species and general geographic distribution of reptiles and amphibians in the United States. Prepare a list of the most common species found in your local area or state.
3. Describe the main differences between:
 - a. Amphibians and reptiles
 - b. Alligators and crocodiles
 - c. Toads and frogs
 - d. Salamanders and lizards
 - e. Snakes and lizards
4. Explain how reptiles and amphibians are an important component of the natural environment. List four species that are officially protected by the federal government or by the state you live in, and tell why each is protected. List three species of reptiles and three species of amphibians found in your local area that are not protected. Discuss the food habits of all 10 species.
5. Describe how reptiles and amphibians reproduce.

6. From observation, describe how snakes move forward. Describe the functions of the muscles, ribs, and belly plates.
7. Describe in detail six venomous snakes and the one venomous lizard found in the United States. Describe their habits and geographic range. Tell what you should do in case of a bite by a venomous species.
8. Do ONE of the following:
 - a. Maintain one or more reptiles or amphibians for at least a month. Record food accepted, eating methods, changes in coloration, shedding of skins, and general habits; or keep the eggs of a reptile from the time of laying until hatching; or keep the eggs of an amphibian from the time of laying until their transformation into tadpoles (frogs) or larvae (salamanders).
 - b. Choose a reptile or amphibian that you can observe at a local zoo, aquarium, nature center, or other such exhibit (such as your classroom or school). Study the specimen weekly for a period of three months. At each visit, sketch the specimen in its captive habitat and note any changes in its coloration, shedding of skins, and general habits and behavior. Find out, either from information you locate on your own or by talking to the caretaker, what this species eats and what are its native habitat and home range, preferred climate, average life expectancy, and natural predators. Also identify any human-caused threats to its population and any laws that protect the species and its habitat. After the observation period, share what you have learned with your counselor.
9. Do TWO of the following:
 - a. Identify at night three kinds of toads or frogs by their voices. Imitate the song of each for your counselor. Stalk each with a flashlight and discover how each sings and from where.
 - b. Identify by sight eight species of reptiles or amphibians.
 - c. Using visual aids, give a brief talk to a small group on three different reptiles and amphibians.

10. Tell five superstitions or false beliefs about reptiles and amphibians and give a correct explanation for each. Give seven examples of unusual behavior or other true facts about reptiles and amphibians.

Scouts must not use venomous reptiles in fulfilling requirement 8a. Species listed by federal or state law as endangered, protected, or threatened must not be used as live specimens in completing requirement 8a unless official permission has been given. In most cases, all specimens should be returned to the wild at the location of capture after the requirement has been met. Check with your merit badge counselor for those instances where the return of these specimens would not be appropriate. Under the Endangered Species Act of 1973, some plants and animals are, or may be, protected by federal law. The same ones and/or others may be protected by state law. Be sure that you do not collect protected species. Your state may require that you purchase and carry a license to collect certain species. Check with the wildlife and fish and game officials in your state regarding species regulations before you begin to collect.

Tree frogs use their adhesive disk toes to climb vertical surfaces.



Contents

What Are Reptiles and Amphibians?7

Taking Count. 11

Identifying Reptiles and Amphibians 15

The Importance of Reptiles and Amphibians 23

Reproduction. 29

Venomous Reptiles 35

Keeping a Pet 49

Field Trips and Talks 59

Facts and Superstitions 65

The Importance of Conservation 69

The Professional Herpetologist. 75

Reptile and Amphibian Study Resources 77



Treat the animals you observe
with care and respect.

Texas spiny softshell turtle

What Are Reptiles and Amphibians?

Boy Scouts always have been interested in snakes, turtles, lizards, and alligators, as well as frogs and salamanders. Finding one of these animals can create excitement on any Scout camp, hike, or outing. Most reptiles and amphibians are harmless, and many species can be kept in captivity with a minimum of care and attention.

Developing knowledge about these captivating creatures leads to an appreciation for all native wildlife. Understanding the life cycle of a reptile or amphibian and keeping one as a pet can be a good introduction to natural history. Knowing about venomous species, and what to do in case of a snakebite, can help you to be prepared to help in case of an emergency.

Reptiles include turtles, lizards, snakes, alligators, and crocodiles. Most reptiles are covered with scales that often are enlarged into shields or plates, and their toes have claws. As is often true in biology, however, exceptions exist. For instance, the great leatherback sea turtle has flippers but no claws; snakes and glass lizards have no legs at all; and softshell turtles no longer have scales, except for a few on their limbs. Young reptiles closely resemble their parents, but their colorations and patterns might be different.



A friend of ranchers and farmers, the Sonoran gopher snake is a large, powerful constrictor that feeds on crop-damaging rodents. This harmless snake often bluffs by hissing and shaking its tail to scare away would-be predators.



The Pickerel frog's strong legs are well-adapted for leaping.

Amphibians include salamanders, frogs, and toads. Unlike reptiles, they have moist, glandular skin instead of scales and, except for a few species in which the toes have hardened tips, none have claws. Most amphibians pass through a *larval stage* (called *tadpoles* in frogs and *larvae* in salamanders), usually in the water, before changing into the adult form, a process called *metamorphosis*.

Reptiles and amphibians are *vertebrates*, meaning they have a

backbone, just as mammals, birds, and fishes do. Insects, worms, shellfish, and other animals without backbones are called *invertebrates*.

A *specimen* is a single member of any species.

Classifying Reptiles and Amphibians

Every type of animal has traits that set it apart from all other animals. Zoologists and biologists use those differences to organize animals into a classification system. A *species* is a group of animals that can pass along its distinctive characteristics to its offspring. Under most conditions, the individuals of a species do not interbreed with those of other species. A group of closely related species that share common attributes constitutes a *genus*.

The study of reptiles and amphibians is called *herpetology*. The word is derived from the Greek words *herpeton*, meaning a reptile or creeping thing, and *logos*, meaning to study. A person who studies these animals is called a *herpetologist*.

Reptiles and amphibians within a species often vary little in appearance. For example, a snake from your state may look much like one of the same species from another state. But species with wide distributions, in a few cases stretching from coast to coast or from the South to New England, may have geographic variations, and individuals in one part of the range may look different from those in another part. Subspecies, these geographic races of a species, can breed with one another

A species' *scientific name* is made up of the *genus name*, which is placed first and capitalized, followed by the *species name*; both are italicized. For example, the scientific name of the common king snake is *Lampropeltis getulus*.

where the boundaries of their ranges meet. A good field guide can help you determine subspecies in your area.

The *range* of a species refers to its natural distribution—that is, the geographical extent of its occurrence in nature. This is usually given in terms of the states, or sections of the country, where a species is found.

An animal's *habitat* is the type of environment in which it lives. Some species need to live in or near water, and their habitats are said to be *aquatic* or *semiaquatic*. Others are suited to hot, dry conditions, so their habitat may be the desert. Some kinds rarely leave the surface of the ground, while others prefer to live in trees or on rock faces. Some have single specialized habitats such as caves, springs, or around the edges of ponds. Others live only in sandy areas or places where certain types of vegetation grow.

Habits describe an animal's behavior and natural history—how it finds, captures, and swallows food; whether it lays eggs or its young are born alive; whether it hides most of the time or is active above ground; whether it is active mostly at night (*nocturnal*) or during the day (*diurnal*); whether it climbs, swims, or burrows, and so on.



California king snake



Grey-banded king snake

In different parts of its geographic range, the same species of snake can vary in appearance, such as the king snakes shown above.



Some species of reptiles and amphibians require highly specialized habitats. The mangrove salt marsh snake lives in the brackish waters and saltwater mangrove swamps of southern Florida.



The plains black-headed snake is a secretive, harmless, rear-fanged species.

How Snakes Move

It is fairly easy to observe how turtles walk and frogs leap, but figuring out how snakes slither along is not quite so obvious. Serpents are very flexible, with a pair of movable ribs for each of the large *ventral scales*, or plates, on the abdomen. A system of muscles connects these ribs to the outer edges of the ventral scales. As the snake flexes these muscles, the free, outer edge of the scales will

catch on any small projection or surface irregularity, giving the snake locomotion. Using this method of crawling, many kinds of snakes can move in a straight line. Few of them do, though. They usually take advantage of the terrain and use various projections as pivots against which they can push as they move forward. With this method, the body moves in S-curves as it follows the head.

Like some other desert species around the world, the American sidewinder flips sideways to achieve locomotion. Some aquatic snakes swim by using the S-curve method against the resistance of the water.

To watch how a snake crawls, put an inch or two of fine sand or gravel in an aquarium or large clear container and tamp the material down. Then put a small or medium-size nonvenomous snake in the container. Set the container on a shelf so your eyes are level with the snake's belly. You will see the movements of the scales as the reptile crawls along.



The Brazilian rainbow boa is a beautiful and powerful boa of the South American tropics.

Taking Count

It is impossible to determine exactly how many species of reptiles and amphibians occur within the borders of the United States because those numbers are constantly changing. New species still are occasionally discovered, especially among the amphibians. Formerly nonnative species from Mexico and other tropical locations are starting to be found in southern states. And sometimes research might indicate that what once was thought to be two species actually are subspecies or, despite outward appearances, two species exist where previously there was thought to be only one. Still, such additions and deletions do not occur very often, so an approximate list of species is a good estimate for general study.



Like the iguana, above, some species of reptiles and amphibians from other countries have become established in the United States, especially in southern Florida.

Approximate Number of Native North American Species*	
Snakes	119
Lizards	91
Turtles (including sea turtles)	50
Crocodilians	2
Frogs and toads	82
Salamanders	113
Total	457

*These figures are estimates that apply only to species native to the 48 contiguous states.

General Distribution

More kinds of amphibians, and many more kinds of reptiles, live in the southern part of the United States than in the northern part. Amphibians are cold-blooded, deriving their body heat from outside sources, so they control their body temperature by moving to warmer or cooler environments. A turtle, for example, warms itself by basking in the sun, retreating to the water when its body becomes too warm.

Habitat preferences also influence distribution. Frogs, salamanders, and most turtles need to live in aquatic or moist environments, such as are abundant in the East and Southeast. Frogs and salamanders also populate moist areas of the Pacific states.

Some kinds of snakes, as well as the American alligator, are *semiaquatic*, spending some time in the water and some time on land. Other snakes are at home in woods, mountains,



Reptiles and amphibians are cold-blooded animals that depend on external heat sources. The western painted turtle is commonly seen basking along ponds and streams in the prairie states, across the Northwest, and in parts of the Southwest.

plains, or prairies. Still other snake species have adapted to life in the desert, where they avoid the daytime heat by living in underground burrows and emerge only at night.

In general, lizards prefer dry conditions and are most abundant in the Southwest, although many kinds of lizards, notably skinks, also abound in the more humid southeastern states. Several kinds of toads and tortoises dig burrows that can extend many feet underground to help them tolerate dry conditions. For example, spadefoot toads in arid regions can remain hidden underground for months at a time, emerging suddenly, and in enormous numbers, when a rare heavy rain forms temporary pools suitable for laying eggs and developing tadpoles.

The greatest number of frog varieties is found in Texas, followed by Florida, South Carolina, Georgia, and Alabama. North Carolina, Georgia, Virginia, and Tennessee have the most salamander types. Texas has the most species of snakes and lizards, followed by Arizona and New Mexico. More turtle species live in Alabama than in any other state, although Texas and Georgia have almost as many. Alligators are found in all the southeastern states, but southern Florida is the only region in the United States with crocodiles.



The Couch's spadefoot toad spends most of its time burrowed underground, emerging only briefly after heavy rains to breed. This unusual creature has vertical catlike pupils and uses a single small projection on its hind feet to burrow.



The harmless wandering garter snake can be found throughout much of the West, including Philmont Scout Ranch in New Mexico, where it hunts minnows, frogs, earthworms, slugs, and other small creatures in its preferred damp or wetland habitat.

Off the Mainland

Scouts living in Alaska, Hawaii, Puerto Rico, and the Virgin Islands will have to take certain differences into consideration. If you live in one of these areas, consult with your merit badge counselor on the best way to complete requirements 6, 8, and 9.

Alaska has only three salamanders, two frogs and a toad, and a single species of snake. Most of these are confined to the extreme southern part of the state.

Hawaii has about two dozen kinds of reptiles and amphibians, almost all of them introduced from other parts of the world. Many have restricted ranges, living only in the areas where they were introduced. Three kinds of sea turtles occasionally appear along the shores of the Hawaiian islands, and the venomous yellow-bellied sea snake has been seen there on rare occasions.

Puerto Rico has fewer species and lower populations of reptiles (fewer than 50 species) and amphibians (approximately two dozen species of frogs and no salamanders) than mainland areas of comparable size in the southern United States.

The Virgin Islands collectively have about as many species as Hawaii. However, as in all archipelagos, some kinds are found on certain islands and missing on others.



The well-camouflaged leaf-tailed geckos are native to the vanishing tropical forests of Madagascar.

Identifying Reptiles and Amphibians

The best way to become skilled at recognizing, identifying, and distinguishing species of reptiles and amphibians is to observe the live animals. Use a field guide for your region to learn about the different species. Most guides will tell you what features are used to distinguish one species from others of similar appearance.

Alligators and Crocodiles

The easiest way to distinguish between the American alligator and the American crocodile is to look at the head. The alligator has a broadly rounded snout, whereas the crocodile's head is almost pointed. American alligators live primarily in freshwater, while American crocodiles prefer saltwater coastal areas. Adult alligators are almost black, while American crocodiles are more of an olive brown color. The fourth tooth on each side of the American crocodile's lower jaw is quite large and in big specimens fits into a groove on the outside of the upper jaw.



Most crocodilians were seriously overhunted for the pet and leather trades through the mid-1960s and are now protected by strict laws.

The shape of the snout can be used to distinguish among the three species of North American crocodilians. This is an American alligator.

Frogs and Toads

Frogs, in general, have smooth, moist skins and lack the conspicuous bumpy warts and relatively dry skins characteristic of toads. Some frogs, such as the bullfrog and leopard frog, have webbing between the toes of their hind feet that aids in swimming. Toads have short hind legs, and when they move they hop. Frogs have long hind legs and leap. Toads are

much easier to catch than frogs, so toads have another way of avoiding enemies. Their warts secrete a fluid that is distasteful or even poisonous to many small animals.

Bullfrogs have declined in some areas, but they have been introduced into areas outside their natural range where they now thrive and compete with native wildlife.



Toads—like the Woodhouse's toad—have dry, warty skins. Their legs are relatively short and adapted for hopping.

It is a good idea to wash your hands after handling all animals.



Like most salamanders, the spring salamander has a smooth skin and no claws on its toes.

Lizards, Salamanders, and Newts

Lizards and salamanders are easy to tell apart. Lizards (reptiles) are covered with scales, their toes have claws, their skins are dry, and they are more likely to be found in the sun. Salamanders (amphibians) have smooth, moist skins, their toes are clawless, and they avoid exposure to the sun. Newts have rougher, drier skins than other kinds of salamanders, but they do not have claws. Newts are exclusively aquatic in the larval and adult stages, but some have an intermediate land form, known as an *eft*, that later readapts to the water.

The Savannah monitor lizard is a popular pet species that often outgrows its home. It is important to think long-term about the adult size and life span of pets *before* you adopt them.



Like all lizards, the skink has claws on its toes and scales on its head, body, and limbs.



The chuckwalla is a large lizard of the southwest deserts that likes to sun itself in rocky areas. When threatened, these amazing herbivorous reptiles quickly crawl deep into rock crevices, gulping air to inflate their bodies and wedge in tight.



Like the Gila monster, most North American snakes and lizards lay eggs. However, water snakes, garter snakes, all North American pit vipers, and some horned lizards all are live-bearers.

Snakes and Legless Lizards

Most snakes have the same general body form—they are limbless and usually slender. While most lizards have four legs, the glass lizards of the South and the legless lizards of California lack limbs entirely and are easily mistaken for snakes. But unlike snakes, legless lizards have eyelids and their bodies are rather stiff. In addition, glass lizards have external ear openings, whereas snakes do not. The worm lizard of Florida also is legless, and its eyes are covered by scales and are often invisible.

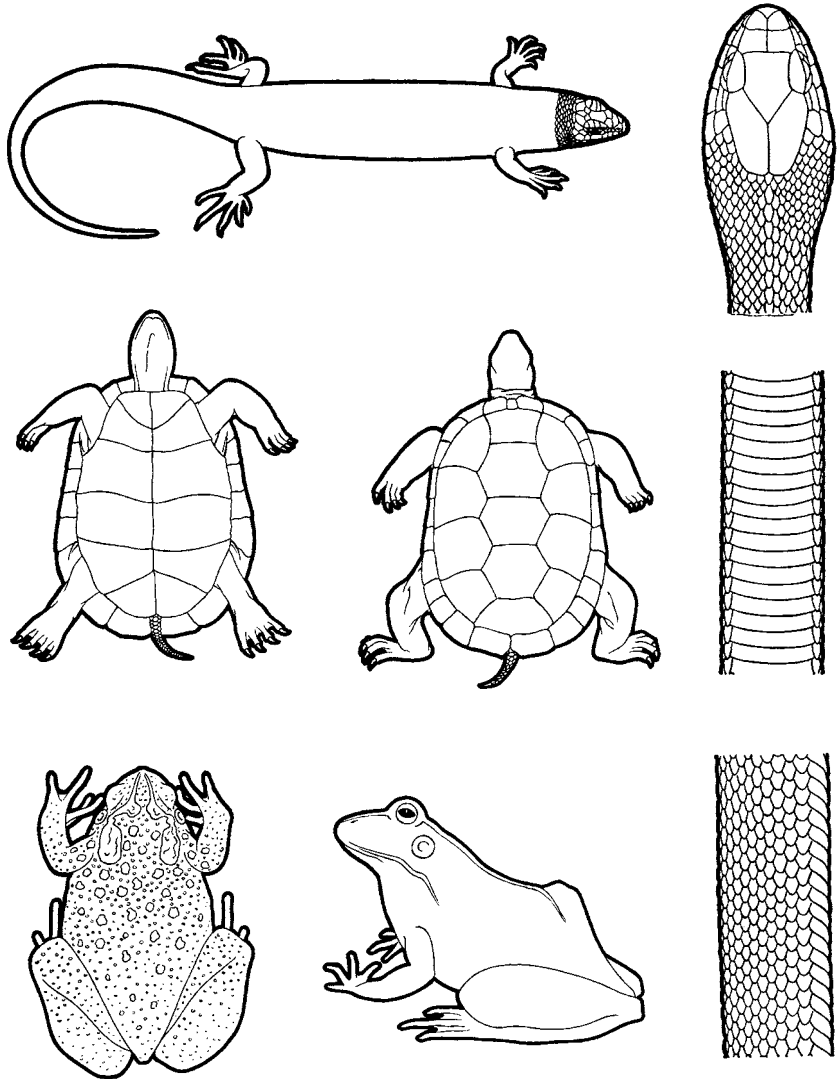
Live-bearing reptiles retain the eggs in the mother's body until hatching time; the young are, in essence, born alive.



The shy and beautiful trans-Pecos rat snake is a harmless, secretive, nocturnal creature found in the rocky canyon area of West Texas, where it hunts for desert rodents.

Sketching Live Animals

Making sketches from live animals is one way to become familiar with their physical qualities. Even if you are not artistic, this method is easy if you follow the outline drawings below.



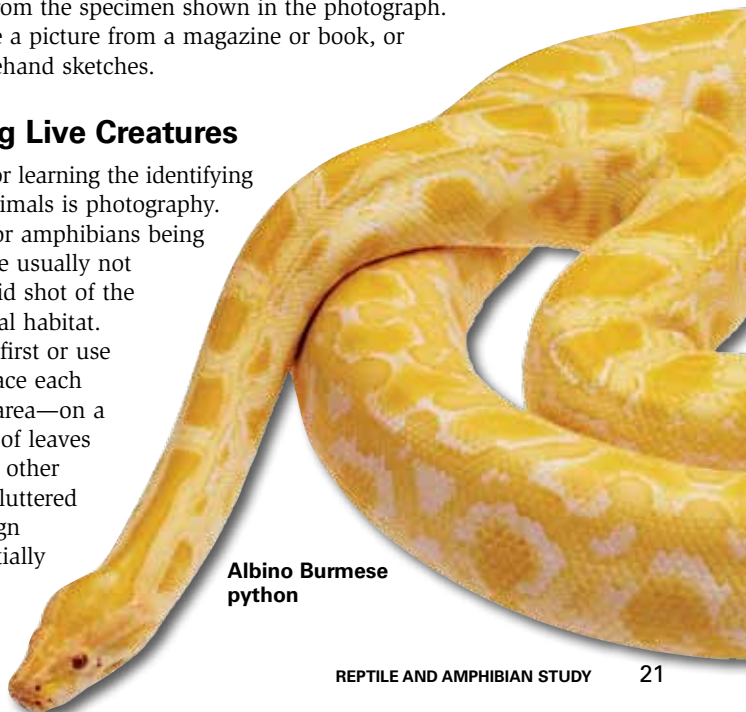
Put a piece of tracing paper over the drawing of the reptile or amphibian similar to the one you want to record.

In most cases you will need to copy only the outline and the eyes, but you may add other details if you wish. When your drawing is complete, use a pencil to sketch the outstanding features such as spots, stripes, or mottling just as you see them in your specimen. These may be filled in later with hatching, stippling, or shading to indicate the various tones of coloration. The partially completed drawing of a salamander, shown here, was prepared this way from the specimen shown in the photograph. You could also trace a picture from a magazine or book, or make your own freehand sketches.



Photographing Live Creatures

Another approach for learning the identifying characteristics of animals is photography. Pictures of reptiles or amphibians being held by someone are usually not as lifelike as a candid shot of the creature in its natural habitat. Catch the creatures first or use tame specimens. Place each subject in an open area—on a rock, a background of leaves or pebbles, or some other surface that is not cluttered with weeds or foreign matter that will partially obscure them.



**Albino Burmese
python**

Note: If you are working with a protected species, check local regulations and handle it correctly.



Some species always seem to be moving and are difficult to photograph, so get another Scout to help you. Have him hold the creature gently in place while you adjust your camera. When you are ready, have him pull his hands away. In most cases the creature will remain still for at least a second or two while you snap your picture. Try for close-ups, and be sure that the characteristics important to identifying the species are obvious in the photograph.

The Importance of Reptiles and Amphibians

Reptiles and amphibians play vital roles as predators, prey, and as part of the fundamental framework of nature.

In earlier times in North America, some species were considered useful to man as food items, skins, or pets. Today, many species that have commercial value are in serious trouble because they have been overharvested or otherwise killed in their natural habitats and now must be protected by federal and state laws. In a few instances, reptiles and amphibians can be raised commercially as food, but such ventures often are unsuccessful.

Most lizards, frogs, toads, and salamanders eat insects, helping to control grasshoppers, crickets, ants, beetles, and other insects that can become pests when overly abundant. Snakes that prey on rats and mice help control rodent outbreaks. Because of their streamlined shapes, snakes can pursue rodents into burrows and other narrow spaces where other predators cannot enter. Rat snakes, milk snakes, king snakes, racers, bull snakes, whip snakes, rattlesnakes, and copperheads can be extremely useful in this regard. Water snakes and cottonmouths eat dead and diseased fishes that might otherwise infect healthy aquatic animals.



Numerous arboreal (tree-dwelling) snakes have bright green coloration to help them blend with foliage.

Catching Prey

Methods of catching, killing, and engulfing prey vary among reptile and amphibian species. Turtles simply seize their food and attempt to tear off pieces with their strong beaks, sometimes securing it with their forefeet. Many turtles eat both plants and animals. Lizards, which eat mainly insects and other invertebrates, grab their prey in their mouths

and gulp it down. If the prey is large and struggling, they may press or hit it against a stone, log, or the ground to subdue it. Alligators and crocodiles crush snakes, fish, ducks, and even turtles in their powerful jaws, or they might drown larger prey, such as raccoons or deer.

Snakes eat only other animals and have a number of ways of subduing prey. Some, such as king and rat snakes, are constrictors. They tighten their coils around a mouse or other prey until its breathing has ceased, and then swallow it. Racers and whip snakes seize prey in



The corn or red rat snake is a handsome constrictor found throughout the Southeast. Large numbers of corn snakes are bred in captivity and, if kept warm with a clean water bowl, this harmless species does very well on a diet of small mice.

their mouths and then throw a coil over it, pressing the prey firmly against the ground. Water and garter snakes hold their prey tightly in their mouths while it struggles, then gradually swallow it. Most venomous snakes attack large prey, such as rats, by striking, letting go, and waiting for the venom to do its work. They then crawl to the dead or dying animal to consume it.

Many amphibians have long, sticky tongues they flick out to



The diamondback terrapin is the only species of turtle that lives in the brackish waters of the salt marsh, between the ocean and freshwater. It is found along the coast from Cape Cod to Texas.

Wildlife Protection Programs

An endangered species is defined as “any species in danger of extinction throughout all or a significant portion of its range.” The Endangered Species Act of 1973 is a powerful law that makes it illegal for a person “to harass, harm, pursue, hunt, shoot, wound, kill, trap, capture, or collect” any animal on the endangered species list. Punishment for breaking endangered species laws includes fines of up to \$50,000 and imprisonment for up to one year.

Many species are on the federal endangered species lists, including the San Francisco garter snake, the Plymouth red-bellied turtle in Massachusetts, the Wyoming toad, the Texas blind salamander, and several species of sea turtles.

Most states have regulations protecting one or more kinds of reptiles and amphibians. Some states protect all species. Some states offer protection for species that are rare or whose populations are declining. For example, Arizona protects the Chiricahua leopard frog, Illinois protects the Illinois mud turtle, California protects the blunt-nose leopard lizard, and New York protects the northern cricket frog.

A species’ protected status can change, though. The American alligator became a federal endangered species in 1975, but as its population increased its status was upgraded to *threatened*, and control of the species was turned over to the states to allow restricted hunting.



All species of sea turtles found in the offshore waters of North America are protected federally as endangered species. Marine turtles spend their lives at sea, but females go ashore to lay their eggs.

To be accurate and up-to-date about the laws in your area, consult your counselor or check with your state's fish and wildlife agency. You can write for a list of protected species and a summary of the regulations applying to reptiles and amphibians, or check the agency's Web site. To obtain a list of federally designated endangered species, write to the U.S. Fish and Wildlife Service.

Some state restrictions protect species during their breeding seasons. Others protect rare and vanishing species at all times from threats like commercialization, indiscriminate collecting, or needless slaughter.



The federally protected eastern indigo snake of the southern United States can grow to be more than 8 feet long.



White's tree frog is a widespread species from Australia and New Guinea, where they prey upon insects and other garden pests.



Water dragons are light-loving, semiaquatic lizards of Australia and Asia.

Reproduction

Strictly speaking, all reptiles and amphibians hatch from eggs, but the methods of courtship, fertilization, laying of eggs, and incubation differ widely. Here, in brief, are what might be called typical reproductive patterns.

Frogs and Toads

Most species of amphibians spend time on land as adults but lay their eggs in water. At mating time for frogs and toads, the male grasps the female from behind, placing his arms around her waist or under her armpits in a position called *amplexus*. As she lays her eggs he releases sperm, some of which enter the eggs. Fertilization is thus external, as it is among most species of fish. The eggs develop rapidly unless the water is very cold.

Tadpoles hatch from the eggs, and after a growing period ranging from a few weeks to two years, depending on the species, the tadpoles develop legs and lungs and become froglets or toadlets. Some kinds of frogs, notably those in the tropics, lay their eggs in damp places on land, and development takes place entirely in the egg. Other species beat the egg jelly into froth, and the tadpoles live in the liquefied center of the mass until rains wash them into nearby pools.



Most frogs and toads mate in the water, where the female deposits eggs to be fertilized.



The draining of natural wetlands can result in death for larval amphibians like these tadpoles.



Many salamanders are terrestrial most of the year but depend on temporary ponds to lay their eggs. Some, such as the marbled salamander, remain with their eggs prior to hatching.

Salamanders

During spring or winter rains, male and female salamanders go to shallow wetland ponds. After preliminary courtship maneuvers, the males deposit *spermatophores*, tiny white packets of sperm that are roughly cone-shaped. The female picks these up with her *vent*, and her eggs are fertilized internally. Once hatched from the eggs, the fishlike salamander larvae have external gills and live in

the water for varying lengths of time, depending on the species and local weather conditions, before they transform into adults.

In some species, notably the mole salamanders that live in most of the United States, some larvae may mature and reproduce without transforming into land-dwelling adults. Some types of woodland salamanders lay their eggs in moist underground cavities or under rocks or logs, and development takes place entirely in the egg. The large (more than 3 feet long) aquatic salamanders of the Southeast, known as sirens and amphiumas, lay their eggs in the water where they live.

Snakes

Fertilization is internal among reptiles. The mating process is similar to that of mammals, except for the curious fact that male snakes and lizards have two organs for copulation, called *hemipenes*, that lie side by side, hidden inside the base of the tail. One of the hemipenes turns outward during mating. In many species, each hemipenis is covered with small spines that help to hold the organ in position in the female's body opening until mating is complete.

In general, copulation among snakes and other reptiles takes place a considerable time before the eggs are actually laid. The sperm may remain active in the female's body for varying lengths of time, at least in the cases of some kinds of snakes and turtles. In some species, more than one clutch of eggs may be fertilized from a single mating, even after a year or more. Mating in most parts of the continental United States usually takes place in spring but also has been recorded at other seasons, notably in autumn.

Roughly half of North American snake species lay eggs, which they deposit inside decaying logs or stumps, in rotting leaves, in piles of rocks, or in other places where they are completely out of sight. In a few species, such as the smooth green snake, hatching may take place within a few days. For other species, it might be many weeks before the young escape from their shells. Usually the mother snake abandons her eggs soon after laying them, although pythons and some cobras in the tropics remain with their eggs. Examples of native snakes that lay eggs are the racers and the worm, ringneck, rat, milk, king, and coral snakes.

The other half of North American snake species retain the eggs within the mother's body until development is complete and the young are born alive. Instead of being encased in relatively tough, parchmentlike shells like the egg-laying snakes, the young are covered by a thin membrane that they break through shortly after leaving the mother's body. Snakes with this type of reproduction include the garter, water, and brown snakes; rattlesnakes; copperheads; and cottonmouths.

Turtles

All turtle eggs are laid and hatched on land. Even the great sea turtles go ashore to lay their eggs, finding a suitable spot, often in slightly moist sandy or loamy soil, and excavating a cavity with the hind legs. When the eggs are laid, the female turtle scoops and packs the sand or soil back into the hole. She may crawl back and forth, dragging her shell, to conceal the nest. Weeks or months later, depending on the species and the weather conditions, the eggs hatch.

Most freshwater and land turtles lay eggs in late spring and early summer. Some kinds of turtles nest twice or more in a season. Hatching for most turtles takes place by early fall, but hatchlings of many species do not leave the nest at that time. They remain in the protected cavity through autumn and winter and emerge the next spring. Hatchlings of aquatic species move toward the nearest water; hatchling land turtles seek the nearest moist cover.



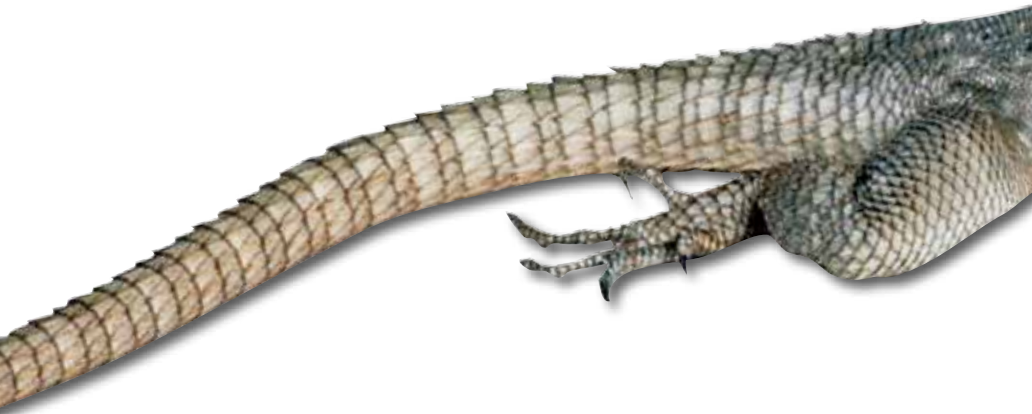
All turtles, including snapping turtles, lay eggs that hatch after several months in an underground nest.

Alligators and Crocodiles

Alligators build nest mounds of vegetation debris—measuring 4 to 7 feet in diameter and 2 to 3 feet in height—near the water. The mother alligator lays her eggs in the mound, where heat from the decomposing vegetation helps incubate the eggs. The mother may remain nearby to guard them and also to uncover them when hatching time arrives. Crocodiles have similar nesting patterns, although some deposit their eggs in the sand like turtles.



Young alligators and crocodiles are vulnerable to other predators and stay in the vicinity of their protective mother for several months after birth.



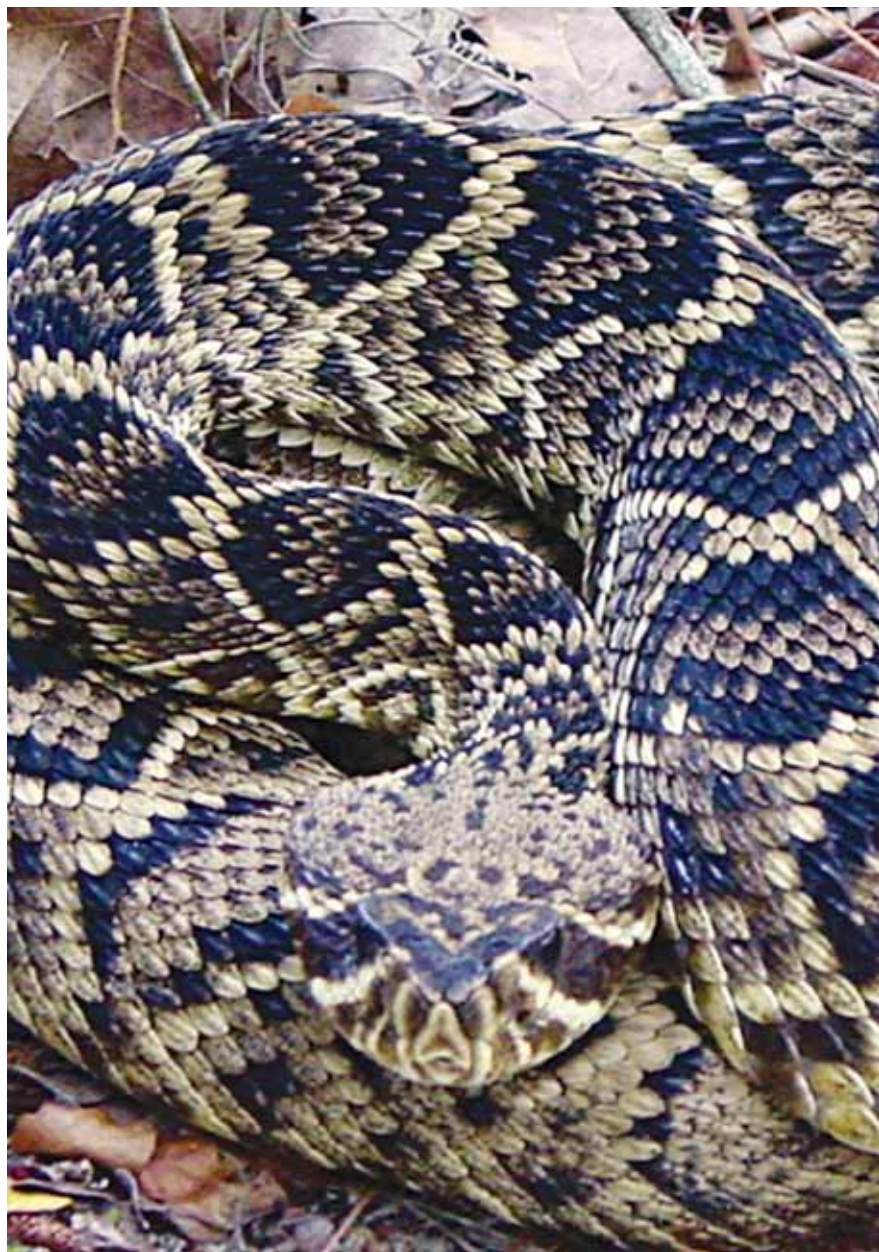
In many reptiles, including all crocodiles and alligators, most turtles, and some lizards, the gender of the offspring is determined by egg incubation temperature rather than genetics. In crocodiles, warmer incubation temperatures produce males and cooler temperatures produce females. In turtles this tends to be just the opposite. Studies of some lizards, such as leopard geckos, have shown temperature-determined gender as well.

Lizards

Most North American lizards lay eggs in hidden, slightly moist places. A few kinds, such as some of the horned lizards and alligator lizards of the western United States, bear living young in the same way many snakes do. Many species of lizards guard their eggs. Some assist in incubation by basking in the sun and then returning to their nests where some of the heat they have absorbed is transferred to the developing embryos.



Lizards can be distinguished from salamanders by their dry, scaly skin, external ear openings, and clawed toes.



The eastern diamondback rattlesnake is the largest venomous snake found in the United States.

Venomous Reptiles

While most reptiles are harmless and all are beneficial to the natural balance of life, knowing the general distinctive traits of venomous North American reptiles, especially snakes, can help avoid unpleasant encounters in the outdoors.

In selecting six kinds of venomous snakes to complete requirement 7, be sure to include any that live in your area. Field guide maps will quickly show you which snakes live in your state. For example, there are three species of rattlesnakes in North Carolina, eight in Texas, and 11 in Arizona.

Snakes

At least one kind of venomous snake is found in every one of the 48 contiguous states except Maine and Delaware. Native venomous snakes are not found in Alaska, Puerto Rico, the Virgin Islands, or Hawaii, except the yellow-bellied sea snake mentioned previously.

Learn to recognize venomous snakes on sight by studying color pictures of them or visiting a zoo or natural history museum. To incorrectly guess a snake's identity could mean disaster, so you must know the venomous species in your area. Be familiar with the appearance of at least one species of each of the three types of pit vipers and one of the coral snakes. The safe and simple rule is never to pick up a snake unless you are certain what kind it is and know that it is nonvenomous.



The large, venomous western diamond-back rattlesnake of the Southwest has a distinctive raccoon-like banded tail. It is an impressive and important predator of many rodents. Even venomous species have a valuable role in nature and are best left alone if encountered in the wild.

For a while after its death, a venomous snake retains much of its reflex action, and its venom remains potent. Poke a “dead” snake vigorously with a long stick to be absolutely sure the snake is dead before you touch it, and do not risk catching your finger on a fang.

Pit Vipers

All species of pit vipers—rattlers, copperheads, and cottonmouths—have a common characteristic: *facial pits*. These deep openings on each side of the head, just below the middle of an imaginary line drawn between the eye and the nostril, are heat-sensitive and help in the detection of warm-blooded prey such as birds and small mammals. They also help the snake take aim when it strikes. The location and appearance of the pits make the snake look almost as though it has four nostrils. All snakes with such pits are venomous.

None of North America’s native snake species is normally aggressive. Snakes almost always will get out of the way if they know you are there. However, an occasional cottonmouth or rattler will stand its ground.

Pit vipers have two other characteristic traits. First, the scales under the tail are arranged in a single row, except near the tip, whereas in the coral snakes and most nonvenomous North American snakes, the scales beneath the tail are in a double row. Second, pit vipers have eyes with vertically elliptical (catlike) pupils, although several other kinds, notably rear-fanged snakes, have similar eyes.

The heat-sensitive pit between the eye and nostril on the pit viper’s head is used to detect warm-blooded prey in the dark. Pit vipers have elliptical pupils, whereas most nonvenomous North American species have round pupils.



Venomous North American snakes rarely advance more than half their own lengths to strike.

These characteristics—pits, scale patterns under the tail, and elliptical pupils—are not usually helpful in identification as field marks because one must get dangerously close to the snake, or actually handle it, to see the marks clearly. But they are helpful in checking out a dead specimen.

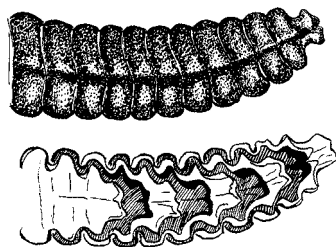
During autumn, pit vipers in some northern and western areas begin to congregate near dens or denning areas where they will spend the winter. On warm autumn days and again in early spring, they sun themselves near the den openings, sometimes in large numbers. During warmer weather they wander afield, but they return to the *hibernaculum*, or winter den, when the days grow cold.

Snakes have no ear openings.

Many people think the shape of a snake's head can distinguish whether it is dangerous or harmless. Do not depend on that myth. Pit vipers have heads that are noticeably wider than their necks, but so do a number of nonvenomous species, such as some of the larger water snakes. The only way to be certain is to know your snakes so well that you can distinguish species at a glance. If you are not sure, do not take a chance.

RATTLESNAKES

The rattle, characteristic of all rattlesnakes, is composed of numerous dry, horny segments that fit together loosely. At birth the baby rattler is equipped with a button, but after the first shedding of skin, a new rattle segment appears at the base of the tail—and so on with each subsequent shedding. At first, each segment is larger than the previous one, but by the time a rattlesnake is fully grown, all the newer segments are about the same size. It is unusual to find a rattlesnake with more than 12 to 15 segments in its string; the ones at the end generally are lost through wear and tear.



Rattle and cross-section. The individual segments of the rattle fit loosely into one another and produce a loud buzzing noise when the snake vibrates its tail.



The dusky pygmy rattlesnake is a small, pinkish venomous species found in a variety of south-eastern woodland habitats. These snakes have nine large scales on the top of their heads compared with the smaller scales found on most larger rattlesnake species.



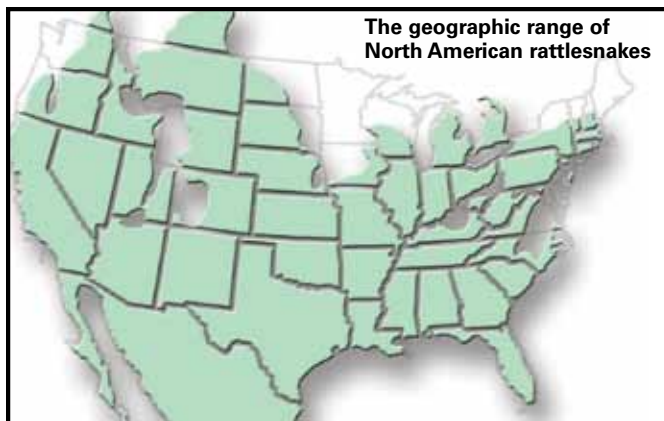
The rattler's tongue is soft, moist, and flexible. It is a sense organ—not a stinger.

A venomous snake does not have to be coiled to bite.

When a rattler is disturbed it vibrates its tail, producing a continuous sound much like a loud hissing or buzzing. In general, large rattlesnakes make loud noises and small rattlesnakes make softer ones. The rattle of the pygmy rattlesnake is so faint it can be heard only a few feet away. The big diamondbacks have rattles loud enough to give you a good scare from several feet back.



The timber rattlesnake is the widest-ranging large rattlesnake of the eastern United States. Adults can be from 36 to 60 inches long or longer. In the southern states, the species is called the canebrake rattlesnake.



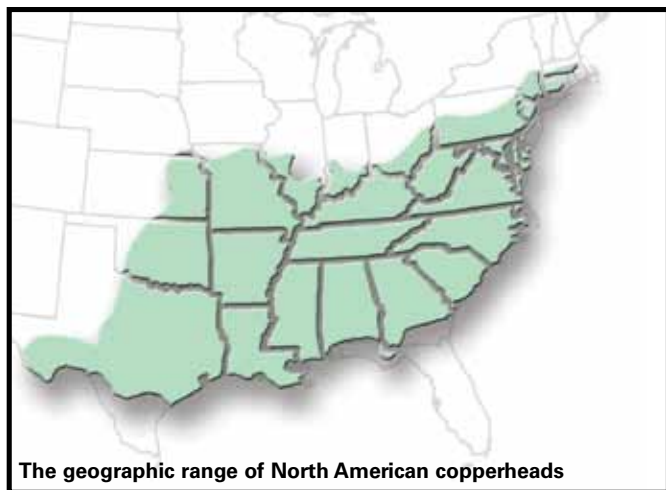
A buzzing noise in the field is not necessarily the warning of a venomous snake. It could be one of many harmless snakes, including racers, king, milk, and pine snakes, that vibrate their tails rapidly when alarmed and can sound much like rattlers if they happen to be among dry leaves. Treat all such noises with caution.

COPPERHEADS

The copperhead gets its name from the coppery-red color of the upper surface of the head. In eastern localities, the snake is marked with reddish-brown or chestnut hourglasses that cross the back. In the far western part of the range, the markings are much wider and take the form of rich, reddish, crisscrossing bands. Over a large part of its range, the copperhead inhabits rocky, wooded areas. It also is found on the coastal plain and even in swampy areas in the South, where it occasionally coexists with the cottonmouth.

The copperhead snake lives in the rocky, forested uplands of the north but also is found throughout the lowlands in the southern states. In the arid, southwestern part of the range, it lives in riverbottom thickets and near springs. The average length of a copperhead is 24 to 36 inches.





The geographic range of North American copperheads

COTTONMOUTHS

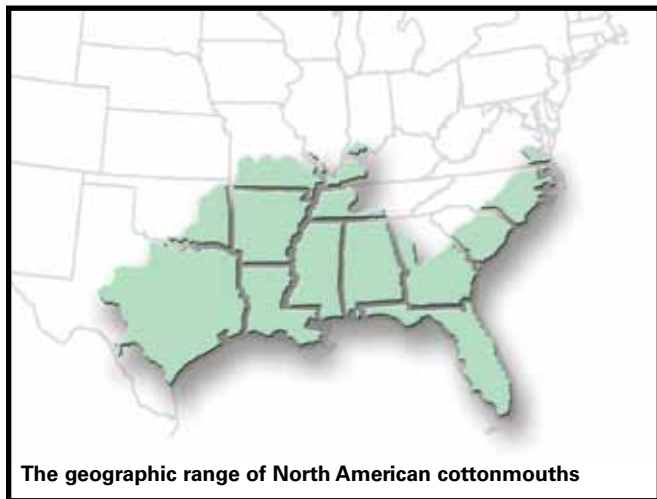
This semiaquatic snake gets its name from the white lining of the mouth, which it displays when alarmed. The jaws can snap shut as quickly as a steel trap. Unlike most snakes, when a person approaches, cottonmouths might stand their ground instead of speedily retreating. Identification can be difficult because many water snakes, particularly the larger, heavy-bodied ones, strongly resemble cottonmouths, especially if they are coated with mud. If you live within the range of the cottonmouth, be cautious near all semiaquatic snakes until you have learned to recognize them.

Young cottonmouths have bold and distinctive bands and the tip of the tail is bright yellow, like those of baby copperheads. When they grow older, the cottonmouth's patterns become much less prominent and the tip of the tail darkens. Large ones often are uniformly black or dark olive in color.

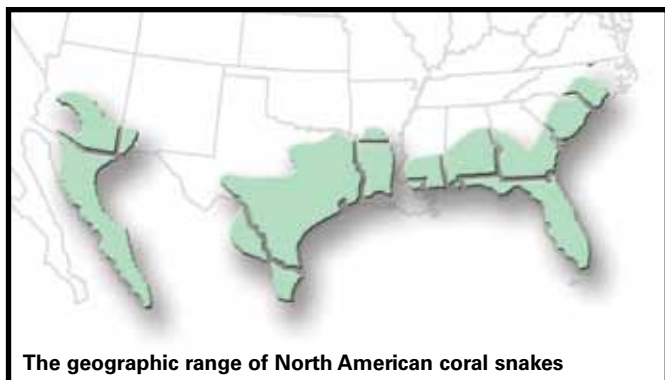
In some regions, water snakes—including the cottonmouth—are dubbed *water moccasins*, which can imply that all water snakes are venomous. Because of this confusion, harmless water snakes are sometimes killed on sight. Reserve the name cottonmouth for the single venomous species, and call all the others water snakes.



The cottonmouth lives primarily in lowland swamps, ponds, and rivers but also invades nearby woodland or rocky habitats. The average length of a cottonmouth is 30 to 48 inches.



The geographic range of North American cottonmouths



The geographic range of North American coral snakes

Coral Snakes

Coral snakes belong to the cobra family and, like their hooded relatives, are potentially very dangerous. Fortunately, they are elusive, small, and seldom seen.

Coral snakes are brightly colored with rings of red, black, and yellow (often cream-colored or whitish in the western species). They could be recognized on sight were it not for the fact that several kinds of harmless snakes look very much like them. Among the mimics are the scarlet snake, the scarlet king snake, and some of the other king and milk snakes.



Coral snakes of the United States belong to two different genera that are separated geographically. The eastern species ranges from North Carolina to Texas, while the western species is found in southwest New Mexico, Arizona, and northwest Mexico.

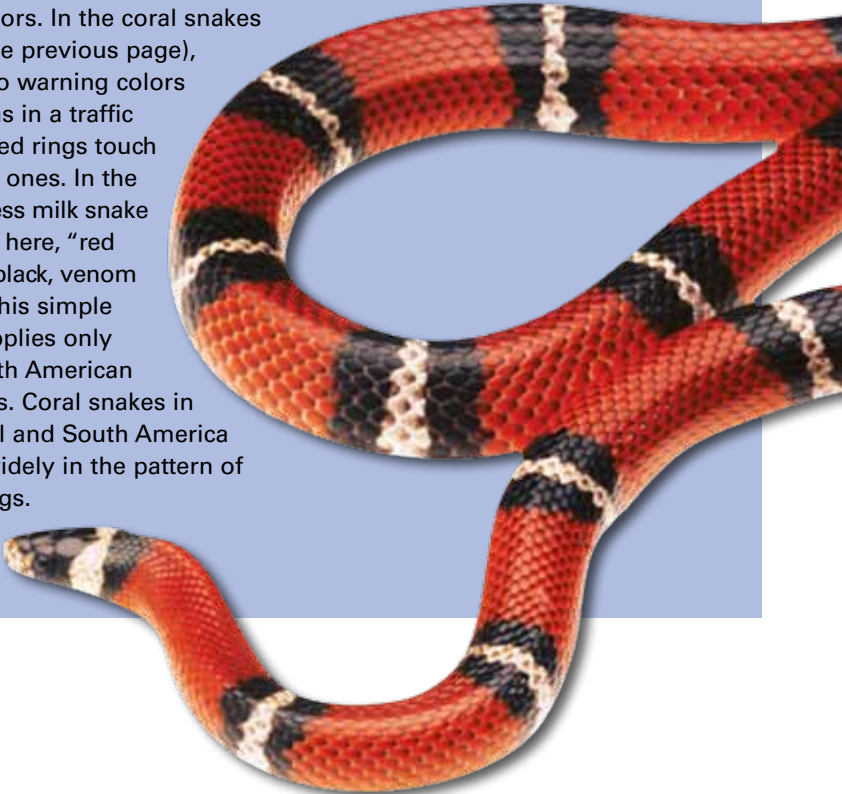


A cousin of the king and milk snakes, the Texas longnose snake is a harmless mimic of the venomous coral snakes.



The California mountain king snake has a patch range from southern Washington to Baja California. On this harmless coral snake mimic, the red bands touch the black bands.

To distinguish venomous North American coral snakes from harmless species, look at the arrangement of the colors. In the coral snakes (see the previous page), the two warning colors meet as in a traffic light: red rings touch yellow ones. In the harmless milk snake shown here, "red touch black, venom lack." This simple rule applies only to North American species. Coral snakes in Central and South America vary widely in the pattern of the rings.



Venomous Lizards

The Gila monster (pronounced *HEEla*) and the Mexican beaded lizard are the world's only two venomous lizards. They are closely related and look much alike. Only the fat-tailed, orange to pink-and-black Gila monster occurs in the United States.



The only venomous North American lizard, the Gila monster is found primarily in Arizona. It also can be found in portions of the adjacent states and ranges far southward into Sonora in Mexico. Its average length is 15 to 20 inches.

When it bites, the Gila monster hangs on like a bulldog, and venom flows into the wound from glands in the floor of the mouth. The Gila monster can be a dangerous animal when handled and should be treated with the same caution as a venomous snake.



The geographic range of the Gila monster

Rear-Fanged Snakes

A few North American snakes have fangs in the rear of the mouth and saliva that acts as a mild venom. Many such snakes will seize a frog or lizard, swallow it far enough for the fangs to come into play, and then wait for the venom to take effect before swallowing completely. Among the rear-fanged snakes are the cat-eyed snake of southern Texas and several kinds of lyre snakes of the Southwest. All are chiefly nocturnal, and their eyes have vertically elliptical (catlike) pupils. Such snakes normally are not dangerous to humans, although a few that live in the tropics, such as the boomslang of Africa, have been deadly.

Fangs

All snakes have teeth, but pit vipers and coral snakes have hollow *fangs* in the front part of the mouth. Coral snakes have short, permanently erect fangs, while pit vipers have proportionately longer fangs that swing back against the roof of the mouth when the mouth is closed. Usually there is only one fang per side. Sometimes two may be apparent on one or both sides when new fangs are growing in.

Fangs normally are shed at regular intervals, a new fang dropping down alongside the functional one just before the latter is lost. Dissection of the skull of a venomous snake will show a series of fangs ready to grow into place, each fang in turn smaller than the one that lies ahead of it.

The tip of each fang is needle-sharp and can penetrate leather and flesh with little difficulty. Near the fang tip is an opening through which the venom is injected into the victim. The base of each fang connects with a tubelike duct that leads directly from the venom-secreting glands (right and left) located at the back of the head.



A rattlesnake skull shows numerous reserve fangs. When something happens to the function of a fang, another one is ready to drop into its place. A rattlesnake's fangs lie in the forward part of the mouth, where they can be brought into play instantly.

A snake can strike several times in succession, injecting venom each time.

When a snake bites, it opens its mouth, raises its fangs, and darts its head forward. After biting a person or other large animal it withdraws immediately. The entire movement is so rapid it takes a high-speed camera to record it. At the moment the fangs penetrate, the snake's head muscles are pressing on the glands, forcing venom through the ducts and fangs into the victim's body. If the snake misses in striking, venom can be ejected from the fangs for a short distance.

Venom

Snake venoms are liquid proteins. No two species of snake have exactly the same type, but all individuals of a given species have similar venom. Some snakes' venom is amber in color; in others it is clear. Some venoms attack the nervous tissues of the victim; others affect the blood system.

Once absorbed by the victim, the venom works rapidly. Small animals may die in less than a minute. In large animals, such as human beings, the venom may take effect more slowly, and an amount that would kill a small person might not be fatal to a large one. The severity of a bite involves other factors, too, including its location on the body, the physical condition of the victim, and whether the snake actually delivered a full dose of venom. Venomous snakes have been known to bite without injecting venom.



A young cottonmouth has a pattern similar to the closely related copperhead. Even newborn pit vipers are able to bite and inject venom and should be treated with caution.

First Aid for a Snakebite

Both harmless and venomous snakes might strike when cornered. The bite of a nonvenomous snake causes only minor puncture wounds and requires ordinary first aid for small wounds—scrubbing with soap and water, then treating with an antiseptic.

A venomous snakebite might cause the victim to feel sharp, burning pain. The area around the bite might swell and become discolored. Get the victim under medical care as soon as possible so that physicians can neutralize the venom. A person who has been bitten by a venomous snake might not be affected by the venom for an hour or more. Within that time, the closer to medical attention you can get the victim, the better off he or she will be. Before setting out, do the following:

- Encourage a frightened victim to remain calm, and give reassurance that he or she is being cared for.
- Remove rings and other jewelry that might cause problems if the area around a bite swells.
- Immobilize a bitten arm with a splint and a sling, keeping the wound lower than the level of the victim's heart.

If the victim must wait for medical attention to arrive, add these treatment steps:

Step 1—Have the victim lie down and remain still. Position the bitten part lower than the rest of the body. If you have not done so already, immobilize the bitten limb with a splint.

Step 2—Put a broad constricting band (a bandanna or a strip of cloth at least 1 inch wide) around the bitten limb 2 to 4 inches above the bite (between the heart and the bite) to slow the spread of venom. The band should be snug, but loose enough to slip a finger under easily. Periodically check for a pulse on both sides of the band. Do not cut off blood circulation. Do not use a constriction around a finger, a toe, the head, or the trunk.

Step 3—Treat for shock, but keep a bitten extremity lower than the heart.



Keeping a Pet

Keeping a reptile or amphibian as a pet is usually easier than taking care of a mammal or bird—a dog or parrot, for example. A snake or a frog needs feeding only once or twice a week and does not have to be taken for walks. But certain rules and precautions must be followed to ensure the health and safety of both pet and owner.



Any gallon-size glass or clear plastic container topped with a tight-fitting wire screen lid will make good temporary living quarters for a reptile or amphibian.

While it is best to make advance preparations for keeping an animal before starting on requirement 8a, the spark of interest that starts you on the Reptile and Amphibian Study merit badge might result from finding a snake, turtle, or other specimen while you are in camp or on a hike. That means you will need temporary quarters quickly. The easiest and simplest temporary home for many kinds of reptiles and amphibians is a wide-mouthed, clear-plastic or glass gallon bottle. Cut a large round hole in the lid and place a piece of screen wire under the lid before you screw it down into place. Fitted with twigs, pebbles or gravel, and a hiding place, this sort of container will suit your new pet fine for a day or so until you can assemble something better. Avoid placing the container in direct sunlight, as this can quickly kill the animal.

Use only
nonvenomous
reptiles to fulfill
requirement 8a.

A satisfactory container for most small reptiles and amphibians can be made from a 10- to 15-gallon aquarium. The lid must be tight, otherwise your specimens will push

Policy Statement on Keeping Caged Animals

Under prescribed conditions, the Boy Scouts of America approves the confinement of small animals in local or national camps or in special events or shows, as part of a learning experience (such as meeting merit badge requirements) in natural history and conservation. In all cases where animals are kept in captivity, six requirements must be met and enforced:

1. Local, state, and federal laws are observed; necessary legal permits are obtained and made readily available.
2. A competent, qualified individual supervises the housing, feeding, and maintenance of the animals.
3. The animals are kept and properly cared for in adequate, sanitary cages as recommended by knowledgeable authorities.
4. Guidance on care and feeding has been obtained from an experienced and knowledgeable individual at a university, zoo, museum, nature center, or veterinary clinic, or from a local wildlife expert.
5. The animals involved are used to tell a nature-conservation story—for example, their habitat requirements, what they eat, their predators, and their place in nature.
6. All animals are returned to the wild at the location of original capture or to an appropriate facility after meeting merit badge requirements or the close of camp. However, check with your merit badge counselor for those instances where the return of these specimens would not be appropriate.

it off and escape. If they get loose in the house, you may not find them until weeks or months later, long after they have died from lack of food and water.

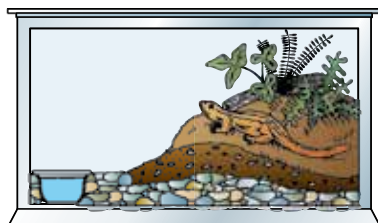
To create your own lid, make a wooden frame just large enough to fit snugly around the aquarium's outside upper edge and then tack wire or plastic screen onto this frame. More elaborate cages can be built if you are handy with tools, but be careful to put the ventilating areas near the top. Otherwise, snakes and lizards will rub their snouts raw against the screen wire in their efforts to escape.

Flooring for some species should consist of small, carefully washed pebbles. Avoid sand and dirt. Both are messy and can work their way under reptile scales, inviting infections. For snakes and lizards, a flooring of neatly folded newspapers, six to eight sheets thick, can be used. Newspaper absorbs excess moisture and is easily replaced when soiled.

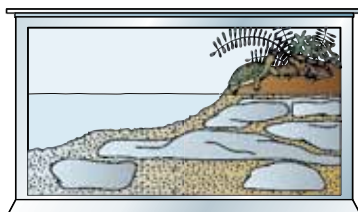
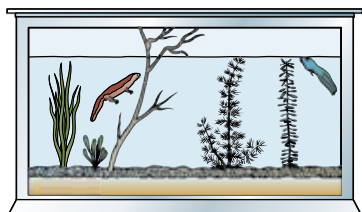
Shelter of some kind is an absolute necessity. Most reptiles and amphibians must have a place where they can hide and feel safe; otherwise they may prowl constantly, refuse all food, and soon die. A simple type of shelter is a piece of bark with the concave side down. Or, small flat stones can be piled up carefully to provide hiding places large enough for the specimen to coil or lie comfortably beneath them. Snakes and some lizards will use a shelter made from a small cardboard box or plastic container that has a hole large enough to enter with ease.

Old World chameleons, like the one shown here, can move their eyes independently from one another to watch for both prey and predators.



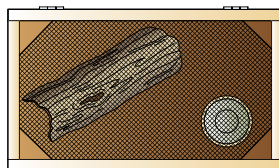


Water dishes in terrariums should be easily removable.

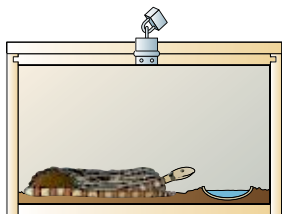


An aquarium can be used for newts, tadpoles, and turtles.

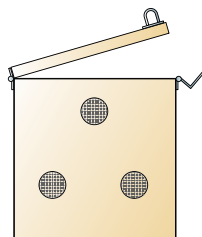
Be careful of using treated tap water in your aquarium—it contains chlorine and other chemicals that can kill amphibians. If this is your only option, let the tap water sit out for at least 24 hours to give the chlorine enough time to evaporate. Other options are to use commercially bottled water or to use a dechlorination tablet sold for tropical fish aquariums.



Top view of a snake cage



Snakes need a piece of bark or a small box for hiding.



End view of a snake cage with the lid raised

In general, amphibians and aquatic turtles require moist conditions. Lizards and snakes (even water snakes) do best in dry cages with a water bowl. A good trick for amphibians is to prop the aquarium so that it is tilted slightly, pour in enough water to make a small pool at the low end, and place the bark or stone shelter at the waterline. These animals need to dry off completely from time to time to avoid fungal infections. Under such conditions the amphibian can be wet or dry as it chooses.

Snakes and lizards need shallow water dishes for drinking and soaking. Sometimes snakes soak too much and develop blisters on their bodies. In such cases they should be given a water dish only for an hour or two each day. Some small lizards will not drink water from a dish but will lap up drops of water. Put a growing plant (in a flower pot) in the cage with them and sprinkle it gently every day, or spray a mist on the sides of the aquarium.

Turtles can live in bare aquariums or plastic wading pools. For decorative purposes you can add clean pebbles at the bottom. Most aquatic turtles should have a place above the water where they can crawl out and get completely dry when they want. A piece of rough wood or large rock that projects above the water surface makes a good basking spot. Box and wood turtles and the terrestrial tortoises need dry quarters, but shallow water dishes must be provided so that they can soak whenever they want. Turtles kept indoors need occasional exposure to ultraviolet light. This can be accomplished by placing them in direct sunlight (sunlight that does not pass through a glass window) for a few hours each week, but be sure they do not get overheated. You also can use full-spectrum (with both UV-A and UV-B) ultraviolet bulbs in addition to a heat source.

Be careful not to keep your pets too hot or too cold. The best temperature ranges are 60 to 70 degrees Fahrenheit for amphibians, 75 to 85 degrees for reptiles, and up to 90 degrees for some lizards and tortoises. Experiment with an electric light for supplementary heat, but test it with a thermometer first so that you do not accidentally expose the animals to high temperatures that might be fatal.



A large cage is better than a small one. With it, you can mount your heat source at one end, and the reptiles or amphibians can either bask or retreat to a cooler part of the cage as they wish.

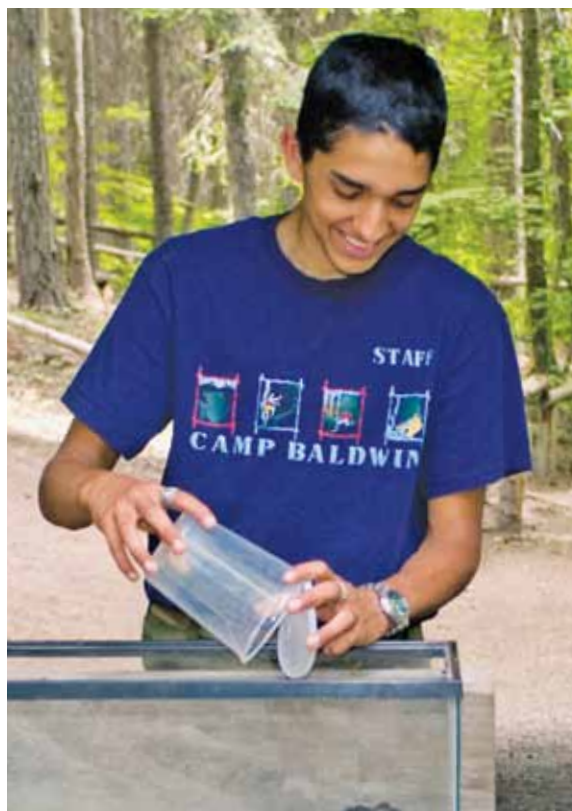
Have a light shining near the cage so the animals will see their live food.

Feeding

Feeding reptiles and amphibians is the most difficult part of keeping them as pets. Avoid choosing an animal with specialized feeding habits like the rainbow snake, which eats eels, or the queen snake, which eats mainly soft-shelled crayfish.

If you are at camp or in the country where you can get live insects, earthworms, frogs, and toads, the task of feeding your pets will be fairly simple. You can keep garter and water snakes by feeding them minnows or small frogs and toads. Garter snakes often will eat earthworms also. Many other snakes require mice, and you may be hard-pressed to obtain enough of these to keep your observations going. Most snakes, however, can be trained to eat dead mice that were fresh-frozen and then thawed at room temperature.

Frogs, salamanders, and lizards eat live insects, paying no attention to dead ones. Getting live insects from around an outside house light or streetlamp where they congregate at night is easy during warm weather. Gently put a small jar over an insect and slide a card between the wall and the mouth of the glass, and the insect is imprisoned. Crickets and grasshoppers can be captured on warm days to make good food for some species. Crickets also can be purchased at some bait stores.



While observing reptiles' and amphibians' feeding habits, do not handle the animals more than absolutely necessary for cleaning purposes. Disturbing them too often may disrupt their feeding schedule and ruin your observations. Also, wash your hands thoroughly after handling the animals. Turtles can transmit a bacterial infection that causes digestive problems in humans, and many amphibians have skin secretions that can severely irritate the eyes and nasal passages.

If you live in a city and must depend on inanimate food, aquatic turtles are good choices for reptile pets. Most aquatic turtles live well on commercial turtle food pellets or, for short periods, raw or cooked meat scraps from your kitchen. Most baby turtles will eat worms or insects, even dead ones. Do not give them any that have been killed by fly sprays or pesticides. You may poison the turtles if you do.

An important part of keeping a reptile or amphibian for a pet is releasing it back into the wild when you no longer want to keep it. If you have captured the animal yourself, you should return it to the spot where you caught it. Do not release animals that appear sick, though, as a disease might be transmitted to individuals living in the natural population. Also, you should never release a species into a habitat where it is not native. Instead, consult with your merit badge counselor, a local zoo, or your state's wildlife department about how to dispose of specimens that are inappropriate for release into the wild.

Finding Eggs and Raising Young

The second option of requirement 8a might be difficult because, aside from purchasing amphibian eggs from a commercial source, there is no easy way to get eggs without going into the field and collecting them yourself. Finding reptile eggs is mostly a matter of chance, but the eggs of frogs and toads can be obtained if you know when and where to look for them. The calling of the males attracts mates, and if you arrive soon after the frog choruses begin, you might be lucky enough to find freshly laid eggs. Some kinds are laid in large floating masses or attached singly or in groups to aquatic plants. Others, as in the case of many kinds of toads, are laid in long strings.

Amphibian Eggs

If you find amphibian eggs, take only a few. They can be transported in a jar or plastic bag filled with water from the pond, but be sure to leave plenty of room for air. Put them in an aquarium containing just enough of the pond water to cover the eggs no more than an inch or so.

Once hatched from their eggs, small tadpoles will eat boiled lettuce, commercial reptile and amphibian food sticks or pellets, fish food, or a mixture of these. Put only a tiny amount of food in the tank at a time or it will foul the water and kill the tadpoles. When the tadpoles grow larger, they may eat tiny amounts of lean ground beef. After the legs begin to appear, provide a floating piece of wood or cork bark on which the froglets or toadlets can crawl out after metamorphosis.

The eggs of pond- or stream-breeding salamanders also can be kept in shallow water in an aquarium. Once the larvae hatch, they can live in the water but require different food from tadpoles. You can purchase small brine shrimp from a pet store or try collecting your own *zooplankton* (small invertebrates) from a pond. If you use brine shrimp, be sure to rinse the salt off before feeding them to your salamanders. When they get larger, larval salamanders will eat small insects or worms.

When you find amphibian eggs in a pond, you may not know whether they are frogs or salamanders, but you will as soon as they hatch. Salamander larvae have gills that are visible on the outside of the head, whereas frogs and toads have gills that are concealed inside the head region. Carefully examine the newly hatched specimens and you will know whether to start off feeding them plant material or small animals. After you have completed the requirement for keeping amphibian eggs, be sure to release the larval salamanders or small frogs or toads at the site where you collected them.

Reptile Eggs

Reptile eggs must never be put in water. They should be placed in a gallon jar with a loose-fitting lid that can be adjusted to control moisture. Slightly moist paper towels sometimes make a good hatching medium, as does damp wood pulp from a rotting log or stump. Vermiculite, a commercial product available at garden stores, is also excellent. The eggs should be buried in the upper surface layer or laid on top of whatever substance is used. If the inside of the jar begins to sweat, remove the lid entirely to let the jar dry out a little. If the eggs start to shrink or show indentations, a small amount of water should be sprinkled on both the eggs and the hatching material. Do not get them too wet or you will have trouble with mold.

Keep a journal during your observation period. Include the date with each entry or observation and jot down what you did to get things started. Record all pertinent observations, such as the temperature of the air and water. When did the tadpoles hatch from the eggs? What did the eggs look like partway through development? When, and at what temperatures, did they transform into froglets or toadlets? When did snakes, lizards, or turtles hatch? What did the animals eat? How often and how? Did any of them shed their skins? Your counselor may wish to see your written record or ask you to summarize your observations.



Observing at a Zoo or Nature Center

If you elect to study a reptile or amphibian at a local zoo or nature center to fulfill requirement 8b, the local public library should be able to help you locate these places. For zoos and aquariums, you also can check with the American Zoo and Aquarium Association.



For your three-month study period, make sure you keep the same specimen under observation, and try to select an individual that can be expected to undergo some kind of change—for example, an immature amphibian approaching metamorphosis, a snake preparing to shed its skin, or a female preparing to give birth. A keeper or curator can help you choose an appropriate subject for the study.

Field Trips and Talks

Taking field trips and giving a talk on reptiles and amphibians makes earning the Reptile and Amphibian Study merit badge even more fun and rewarding. Here are some pointers on how to get started.

Hearing Frogs and Toads in the Outdoors

Hearing frogs and toads calling means getting into the country at night. These amphibians call from ponds, puddles, roadside ditches, swamps, and stream edges, usually where the water is shallow and near where their eggs will be laid. In the northern states, the choruses begin when the first warm rain arrives in early spring. In the South, some species sing during the winter. In most areas, some species call during spring and summer. In the arid West, sudden rainstorms start them calling.

Not all species of frogs and toads sing at once. In the Northeast, for example, spring peepers, chorus frogs, and wood frogs are the first to be heard. They soon are followed by the leopard and pickerel frogs, and American toads. Cricket frogs and treefrogs usually sing later, and Fowler's toads and bullfrogs may be the last to join the choruses. Weather plays a big part. A warm, wet early spring may stimulate many species to call at the same time. Later, a rain may set them off out of season when a few males call briefly, long after the breeding time is over.



The red-eyed tree frog is an arboreal species from Central America.

Some frogs sing near shore, but others do not. Waders or hip boots may be the most comfortable cold-weather wear if you plan to wade into the water. If the waters are not too cold, you may prefer leather boots or canvas sneakers.

Always take a bright flashlight and fresh batteries, and put a small backup flashlight in your pocket in case the main one goes out while you are in the middle of a swamp. Also, you must always get the landowner's or land manager's permission before you start exploring.

Only male frogs call. During their first enthusiasm they may sing day and night. After a day or two the choruses usually are heard only after dark. It is well to venture out at dusk and listen as you hike or drive along a road that runs through a swamp, or in an area where there are ponds and puddles. Once you locate a chorus, approach slowly and quietly, otherwise the frogs will be alarmed and dive into the water and you may not see or hear them again all evening. It is normal for them to stop calling when you get near. When that happens put out your light and stand perfectly still until they start again. If you are good at imitating their calls, they may respond to you promptly. Then stalk slowly forward again, and repeat the procedure until you are close enough to make your observations.

In arid country, sudden rainstorms may bring toads out in enormous numbers. They call vigorously for a night or two and then disappear. Under these conditions you had better go frogging at once and not wait for another night.



Bullfrogs can grow as big as 6 inches long and, not surprisingly, have big appetites.

Observing Frog and Toad Calls

There are many things to observe. Is the frog in a bush or on a tree? Is it at the water's edge? Is it floating at the surface? How does it make its call? Frogs and toads have throat sacs that inflate when they sing, serving as resonance chambers. Is there a single, bubblelike sac, as in the case of many toads? Or is it elongated like a sausage? Many frogs have a pair of vocal sacs, one at each side of the throat. You should note all these details.

Imitating the calls will take practice. Getting them right can depend on how clever you are with your voice. Whistling like a spring peeper is easy. A chorus frog call can be simulated by running a finger slowly along a comb, touching the smallest teeth last. Once you have heard the songs, you can invent ways to imitate them.



The African bullfrog, or pixie frog, spends dry seasons buried in protective mud.



Male frogs like this pine barren's tree frog use their vocal sacs to amplify their calls and attract females to the breeding pond.

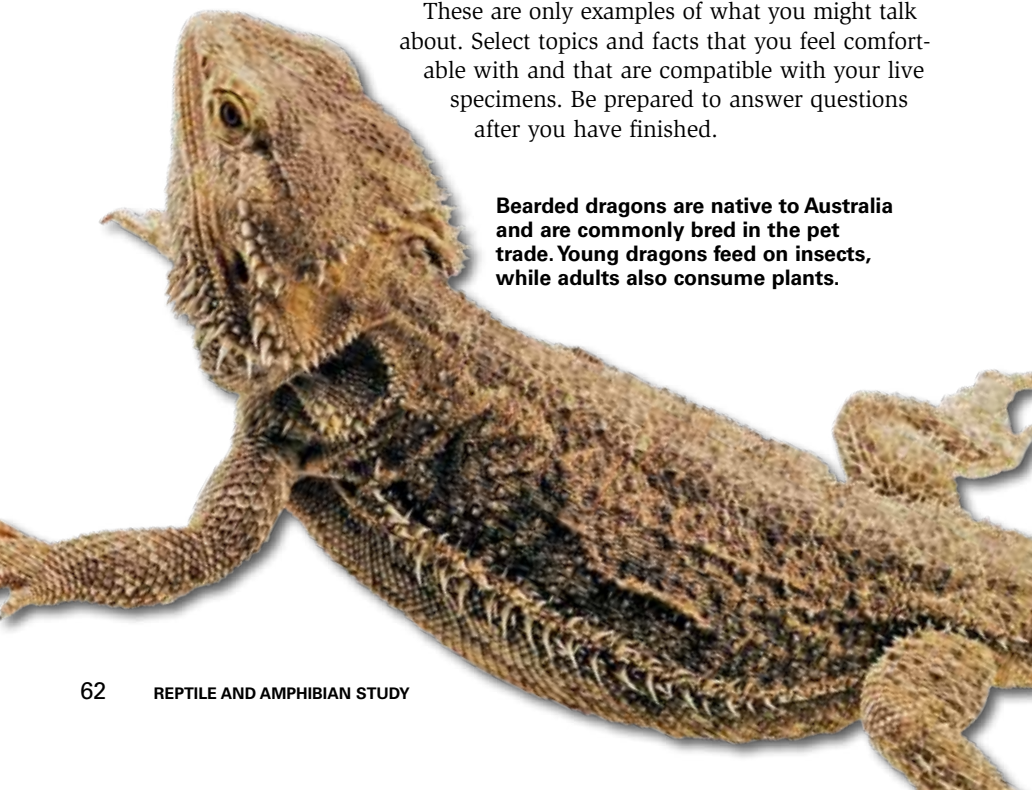
Giving a Talk on Reptiles and Amphibians

The secret of success is to prepare your talk in advance. Make an outline of what you want to say. Remember that the people in your audience probably will know little about these animals. Explain the differences between a reptile and an amphibian and use live specimens or pictures to illustrate important points.

You will need to spend some time studying books on reptiles and amphibians so that you know more about the subject than your audience does. The resources section in the back of this pamphlet lists a great variety of resources. Learn the answers to such questions as how a snake crawls, why it sticks out its tongue while you hold it, and why it has no eyelids. Explain the difference between a land or box turtle and the aquatic kinds, pointing out the webbed feet of the latter. Tell your audience why many kinds of lizards have tails that break off readily, or why turtle shells of different species vary in shape and color. Explain the development of frogs and toads from egg to tadpole to adult. Tell them what you find most exciting about reptiles and amphibians or about your observations of species in captivity or in the wild.

These are only examples of what you might talk about. Select topics and facts that you feel comfortable with and that are compatible with your live specimens. Be prepared to answer questions after you have finished.

Bearded dragons are native to Australia and are commonly bred in the pet trade. Young dragons feed on insects, while adults also consume plants.







The ornate horned frog is a well-camouflaged terrestrial (land) species from the Amazon Basin region.

Facts and Superstitions

Put that toad down or you'll get warts! Don't get too close to a snake or it will chase you! And keep your mouth closed around salamanders because they will jump in if you're not careful!

These and other legends like them are some of the wild tales that have been told about reptiles and amphibians over the years. Although a few of these folktales have some factual basis, most of them are just plain yarns spun for effect.

When it comes to snakes, some folks are willing to swallow the most fantastic yarns. While snakes do some amazing things, there probably are more tall tales told about snakes than any other animals. Here are some:

- A hoop snake rolls down hills with its tail in its mouth and has a venomous stinger in its tail.
- Snakes that live around barns milk cows.
- Snakes swallow their young to protect them.
- The whip snake will chase a person down, wrap around him, and thrash him to death.
- Snakes chase people.
- Snakes are slimy.
- Snakes go blind during the dog days of August.
- When a snake is killed, its tail wriggles until sundown.
- If a snake is cut into pieces, each piece will form a new snake.
- Snakes are charmed by music.
- Snakes travel in pairs and seek revenge if one is killed.
- Snakes hypnotize their prey.
- A rattlesnake adds a new rattle each year of its life.

And while not as plentiful as the tales told about snakes, superstitions about amphibians are just as interesting:

- Toads give people warts.
- Salamanders like fires.
- Tree frogs predict rain.
- Frogs and toads rain down from the sky.
- Salamanders poison springs and jump into people's mouths.

None of the above statements is true, and some obviously are absurd. But unless one is familiar with the facts about reptiles and amphibians, some are believable. See if you can add to the list of superstitions and false beliefs by talking to people in your area, and see if you can determine what the facts are that may have led to the misconception.

Stranger Than Fiction

Here are the facts behind some of the misconceptions mentioned above:

Rat snakes eat many rats and mice, and barns and other farm buildings often are excellent places to find food. So finding snakes around dairy farms is to be expected. But the rat snake's mouth is full of needle-sharp teeth for holding small animals and is not equipped for sucking milk from a cow.

Many serpents, such as kingsnakes and racers, eat other snakes—sometimes even their own kind. So if a person happened to come along at the right moment, it would be easy to jump to the conclusion that a mother snake was trying to protect her offspring. The illusion would be strengthened if the larger snake was disturbed and disgorged the smaller one, enabling it to escape.

The eastern coachwhip is one of the longest snakes in North America, reaching lengths of more than 7 feet. The tail somewhat resembles a braided bullwhip. This may be the source of the story about a snake that whips people.

No snakes in North America are habitually aggressive toward human beings and none is known to chase people. A few, like the big diamondback rattlers and the cottonmouth, will sometimes stand their ground, and occasionally a snake will strike out if harassed. But the average snake, given a fair chance to escape, will speedily get out of a person's way. Sometimes during the mating season racers and other snakes may feign an attack. Or, in order to reach their shelters, snakes may crawl directly toward persons who happen to be in the way.

No snakes are naturally slimy. If they have just crawled from the water, they may look that way. Some kinds are so shiny and iridescent they appear oily. To the touch, however, snakes feel much like soft, pliable leather.

When a snake has met a violent death, reflex action often lasts quite a while afterward, and the tail can wriggle for some time, but sundown plays no part in it.

Snakes do not have ears or even ear openings and therefore cannot hear the normal airborne sounds, such as music, that humans hear. They feel vibrations through their lower jaw, primarily those transmitted through the ground's surface.



Frogs like this gray tree frog often call on warm, rainy nights but also will call at other times. Far from being good prognosticators, they may call as loudly before good weather as before rain.



Giants of the tortoise world, the Galapagos tortoise can live more than 150 years and grow to hundreds of pounds.

The Importance of Conservation

Reptiles and amphibians have taken a frightful beating over the years. Snakes have been stoned or clubbed to death. Basking turtles have been used for target practice by people with rifles, as have lizards and frogs by children with slingshots. All kinds of reptiles and amphibians have been killed for no good reason. Fortunately, attitudes about protecting reptiles and amphibians are changing.

Most people now recognize that reptiles and amphibians serve an important environmental role. They prey upon other animals, including great quantities of mice, rats, and insects, and are in turn eaten by predators such as hawks, carnivorous mammals, and other reptiles. They are important links in the food chain of other native wildlife.

Our state and national park systems and the efforts of many private groups are evidence of our attempt to preserve wildlife communities. But the pressure of a growing population makes it increasingly difficult to keep these areas natural.

You can find out what plants and animals are protected in your state by contacting your state's parks and wildlife department, or by visiting the U.S. Fish and Wildlife Service Web site: www.fws.gov.

Remember,
extinction is
forever, but
endangered
means there is
still time if we
care enough to
act quickly.



Many species of reptiles and amphibians, such as the closely related gopher frog and crawfish frog, occur in isolated populations over a wide geographic area. The destruction of small wetland habitats threatens the survival of such species.

A deadly enemy of reptiles and amphibians today is habitat destruction. When we drain or fill bogs, swamps, and other wetlands for industrial sites, shopping centers, and housing developments, we destroy the habitats of future generations of frogs, salamanders, snakes, and turtles. Destructive lumbering and atmospheric pollution can contribute to the reduction of many species' forest homes. Pollution in our streams can make the water unsuitable for amphibians or aquatic reptiles. When we spray our fields, forests, and roadsides with chemicals that are deadly to reptiles and amphibians, we may be affecting an important part of the ecosystem.



The handsome, sturdy-looking wood turtle is a vanishing semiaquatic species native to riparian areas of the Northeast.

Another form of destruction comes from the pet trade. No harm is done by keeping a turtle, frog, or harmless snake as a pet, provided the animal receives good care and attention. But enormous numbers of these creatures die needlessly every year through ignorance and carelessness. Most people have little or no knowledge of how to care for such pets, many of which are purchased as novelties or on impulse.

Hundreds of thousands of live reptiles and amphibians are imported legally into the United States each year, largely for the pet trade. Many more than that are believed to be imported illegally. They are handled in such large quantities by some dealers that individual care is impossible. Many die in shipment, or in the hands of owners who do not know how to care for them or who simply don't care. The drain on native species by unscrupulous collectors is also severe, causing many species of native reptiles and amphibians to receive protection from certain states, as well as from the federal government.



Loss of much of its specialized wetland habitat to development, combined with illegal collection for pets, has made the small, rare, and secretive bog turtle a federally endangered species.



You can help to protect reptiles and amphibians by bearing the following rules in mind:

1. Never collect or keep more specimens than you can care for. Kinds that are known to be rare or that are legally protected should not be collected at all.
2. When you overturn logs or rocks or boards while looking for snakes or other specimens, put this cover back in place to serve as shelter for the next animals that come along.
3. Provide proper food, shelter, and water for any specimen you keep in captivity, and make sure the temperature in the cage is appropriate for the species.
4. When you are through examining or keeping them, liberate your specimens at the same spot where you caught them. You aren't helping by turning it loose in a strange environment where it has little or no chance to survive.
5. Teach your fellow Scouts, family, friends, and acquaintances by telling them repeatedly that reptiles and amphibians are an important component of our natural heritage and should be protected. Of course, exception may be made for the few venomous kinds found close to houses or campsites, but even these deserve our protection in their natural habitats.



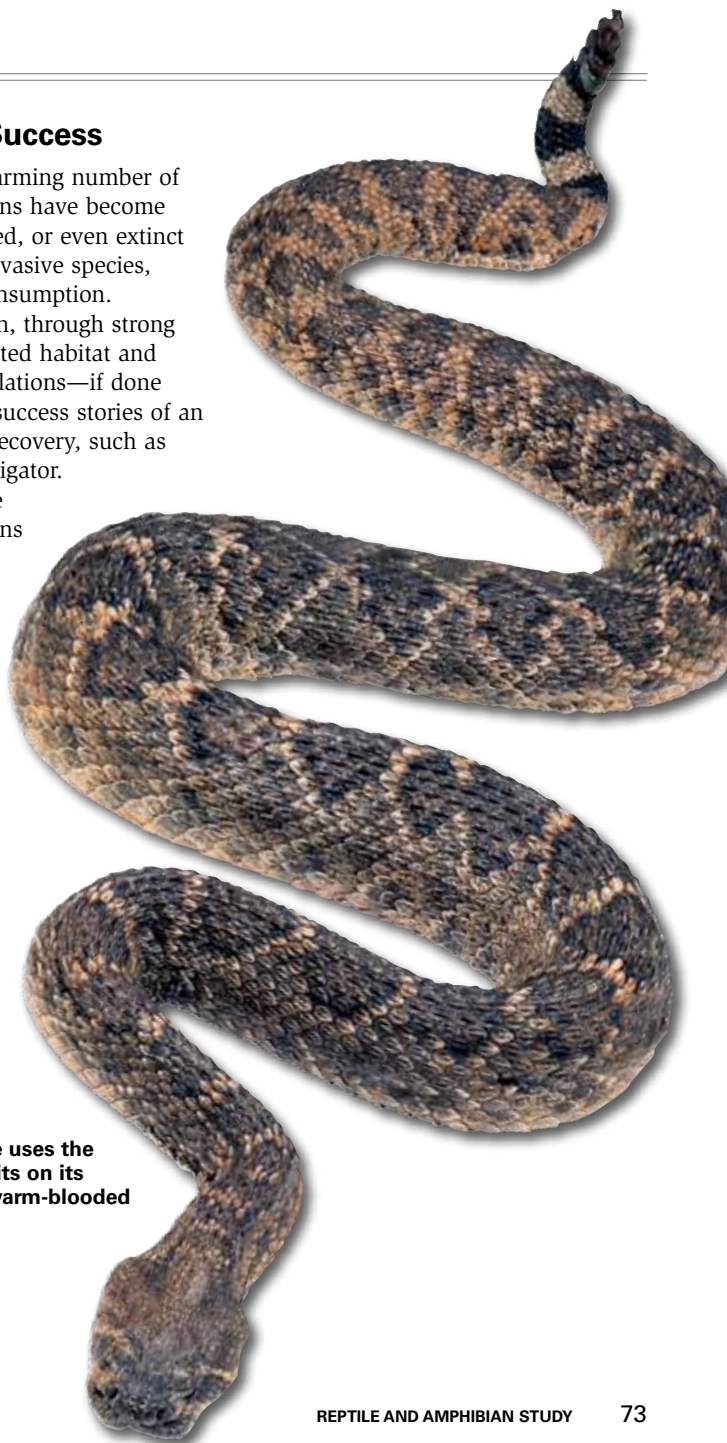
Aquatic turtles are well-streamlined for swimming.

Conservation Success

In recent years, an alarming number of reptiles and amphibians have become threatened, endangered, or even extinct due to habitat loss, invasive species, pollution, and overconsumption. However, conservation, through strong education with protected habitat and enforced harvest regulations—if done in time—can lead to success stories of an endangered species' recovery, such as with the American alligator.

In summary, give reptiles and amphibians every break you can. Do not disturb them any more than necessary, and teach others to let them alone. Be a good conservationist.

The rattlesnake uses the heat-sensing pits on its snout to find warm-blooded prey at night.





The Professional Herpetologist

Herpetology makes a fascinating hobby. It can provide healthy outdoor exercise and a sense of adventure if you have access to a wild or suburban area and have permission to observe or collect. Indoors, it is fun to maintain a cage or terrarium. Feeding and caring for them, watching their behavior, and having a chance to make observations of possible scientific value either at home or in the field are fun.

Becoming a professional herpetologist is a more serious endeavor, for the career opportunities are limited. Most professionals have college training in the field of biology. Many biology teachers in colleges and universities devote their research time to the study of reptiles and amphibians. Some zoos and museums employ curators of amphibians and reptiles. However, no matter how great your training and enthusiasm, you might have to wait for an opening to develop in any of these professions.

Most adults who are interested in herpetology earn their living in other ways. They have careers not necessarily related to science but use their spare time in pursuit of a side career in herpetology. Many regions of the country have herpetological societies that serve as excellent opportunities for amateur and professional herpetologists to meet.

If you want to explore the possibility of becoming a herpetologist, write to the Secretary, Division of Amphibians and Reptiles, National Museum of Natural History, Washington, DC 20560. Ask for a copy of Career Opportunities for the Herpetologist. The same office can supply you with a list of herpetological societies in the United States if you are interested in joining one.

Monitor lizards are thought to be closely related to snakes, and this family includes the world's largest lizards. The giant Komodo dragon is also a member of this family.



Reptile and Amphibian Study Resources

Scouting Literature

Reptiles and Amphibians pocket guide; *Bird Study*, *Fish and Wildlife Management*, *Fishing*, *Fly-Fishing*, *Hiking*, *Insect Study*, *Mammal Study*, and *Nature* merit badge pamphlets

Visit the Boy Scouts of America's official retail Web site at <http://www.scoutstuff.org> for a complete listing of all merit badge pamphlets and other helpful Scouting materials and supplies.

Field Guides to North American Reptiles and Amphibians

Behler, John L., and F. Wayne King. *The Audubon Society Field Guide to North American Reptiles and Amphibians*. Knopf, 1988.

Conant, Roger, and Joseph T. Collins. *A Field Guide to Reptiles and Amphibians of Eastern and Central North America*. Houghton Mifflin, 1991.

Smith, Hobart M., and Edmund D. Brodie Jr. *A Guide to Field Identification: Reptiles of North America*. Golden, 1982.

Stebbins, Robert C. *A Field Guide to Western Reptiles and Amphibians*. Houghton Mifflin, 1985.

Tyning, Thomas F. *Stokes Guide to Amphibians and Reptiles*. Little, Brown, 1990.

Natural History Guides

Bishop, Sherman C. *Handbook of Salamanders*. Comstock, 1967.

Ernst, Carl H. *Venomous Reptiles of North America*. Smithsonian Institution, 1992.

Ernst, Carl H., George R. Zug, and Molly Dwyer Griffin. *Snakes in Question: The Smithsonian Answer Book*. Smithsonian, 1996.

Ernst, Carl H., and Roger W. Barbour. *Snakes of Eastern North America*. George Mason University, 1989.

Ernst, Carl H., Roger W. Barbour, and Jeffery E. Lovich. *Turtles of the United States and Canada*. Smithsonian, 1994.

Greene, Harry W. *Snakes: The Evolution of Mystery in Nature*. University of California Press, 1997.

Hofrichter, Robert. *Amphibians: The World of Frogs, Toads, Salamanders and Newts*. Firefly Books, 2000.

Ross, Charles A. *Crocodiles and Alligators*. Facts on File, 1989.

Caring for Reptiles and Amphibians in Captivity

Frye, Fredric L. *A Practical Guide for Feeding Captive Reptiles*. Krieger Publishing, 1991.

Mattison, Christopher. *The Care of Reptiles and Amphibians in Captivity*. Blandford Press, 1987.

Rossi, John V. *Snakes of the United States and Canada: Keeping Them Healthy in Captivity*. Krieger, 1992.

Sounds of Frogs and Toads

These are records or tapes of the calls of a great many of our native frogs and toads. They can be ordered through the following addresses or Web sites.

Bogert, Charles M. *Sounds of North American Frogs: The Biological Significance of Voice in Frogs*. Folkways Cassette Series: 06166, 1958. Office of Folklife Programs, 955 L'Enfant Plaza 2600, Smithsonian Institution, Washington, DC 20560.

Elliott, Lang. *The Calls of Frogs and Toads*. NatureSound Studio. Web site: <http://www.naturesound.com>

Kellogg, Peter P., and Arthur A. Allen. *Voices of the Night*. Library of Natural Sounds, 1982. Cornwell Laboratory of Ornithology, 159 Sapsucker Woods Road, Ithaca, NY 14850.

_____. *Sounds of North American Frogs*. Smithsonian Folkways. Web site: <http://www.folkways.si.edu>

Organizations and Web Sites

American Museum of Natural History

Central Park West at 79th Street
New York, NY 10024-5192
Web site: <http://www.amnh.org>

Association of Zoos and Aquariums

8403 Colesville Road, Suite 710
Silver Spring, MD 20910-3314
Web site: <http://www.aza.org>

National Geographic Society

P.O. Box 98199
Washington, DC 20090-8199
Web site: <http://www.nationalgeographic.com>

National Fish and Wildlife Foundation

1120 Connecticut Ave. NW, Suite 900
Washington, DC 20036
Web site: <http://www.nfwf.org>

National Wildlife Federation

11100 Wildlife Center Drive
Reston, VA 20190
Web site: <http://www.nwf.org>

Smithsonian National Zoological Park

National Zoo Information
DEVS P.O. Box 37012 MRC 5516
Washington, DC 20013-7012

U.S. Fish and Wildlife Service

1849 C. St. NW
Washington, DC 20240
Web site: <http://www.fws.gov>

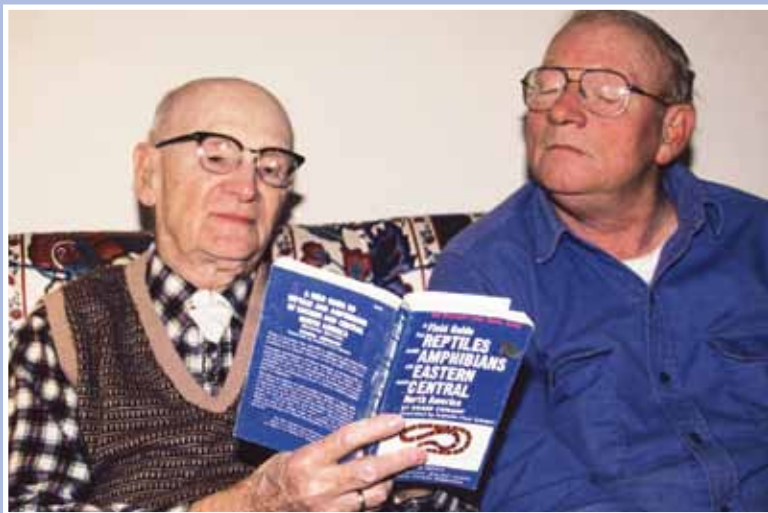
Acknowledgments

The Boy Scouts of America extends thanks to Eagle Scout Gary M. Stolz, Ph.D., U.S. Fish and Wildlife Service. A dedicated and enthusiastic Scouter, Dr. Stolz updated this edition of the pamphlet and also provided many of the photographs used herein.

The BSA gratefully acknowledges the guidance of zoology professor J. Whitfield Gibbons of the University of Georgia's Savannah River Ecology Laboratory in the 1993 revision of this pamphlet. Thanks also to Barbara

Dietsch, Tony M. Mills, Keith Mills, Joseph H. K. Pechmann, and David E. Scott for their assistance. Marie Fulmer and Sarah Collie, also of the University of Georgia's Savannah River Ecology Laboratory, provided administrative and research support for the 1993 edition.

We appreciate the Quicklist Consulting Committee of the Association for Library Service to Children, a division of the American Library Association, for its assistance with updating the resources section of this merit badge pamphlet.



**Dr. Roger Conant
1909–2003**

This *Reptile and Amphibian Study* merit badge pamphlet is dedicated in memory of Dr. Roger Conant, former director of the Philadelphia Zoo and author of numerous herpetology publications, including the first edition of this book. (He is pictured here with his son, Skip, *right*, also an avid naturalist.)

Photo and Illustration Credits

©Artville LLC, 1998—cover (*albino boa constrictor*); pages 10 (*bottom*), 18 (*left*), 21 (*bottom*), 27 (*bottom*), 43 (*bottom*), 62 (*top*), 62, and 76

Allen Bridgman, SCDNR, *Bugwood.org*, courtesy—page 42 (*bottom*)

Bill Buchanan, courtesy—pages 74 (*inset*) and 79

David Cappaert, Michigan State University, *Bugwood.org*, courtesy—pages 29 (*top*) and 67

©Comstock Inc. 2001—pages 28 and 72–73 (*both*)

Isabelle Hunt Conant, courtesy—pages 21 (*center*) and 45

©Digital Vision Ltd.®—pages 14, 23, 51, 59, 64, and 68

Chris Evans, River to River CWMA, *Bugwood.org*, courtesy—page 18 (*top right*)

HAAP Media Ltd., courtesy—cover (*crocodilians*; *turtle at bottom left*)

James Henderson, Gulf South Research Corporation, *Bugwood.org*, courtesy—page 15

Jeffrey J. Jackson, University of Georgia, *Bugwood.org*, courtesy—page 42

©John Foxx Images, 1999—page 74 (*background*)

©Jupiterimages.com—pages 8, 9 (*bottom*), 18 (*bottom right*), 29 (*bottom*), 30, and 61 (*bottom*)

Jerry A. Payne, USDA Agricultural Resource Service, *Bugwood.org*, courtesy—pages 25–26 (*both*)

©PhotoDisc Inc., 1996—cover (*tree frog*); pages 4 and 39 (*bottom*)

©Photos.com—cover (*lizards at top right, center left*; *turtle at top left*; *frog at bottom right*) and page 44 (*top*)

David E. Scott, courtesy—pages 34 and 46

Walter Stahel, Environmental Bay of Plenty, *Bugwood.org*, courtesy—page 11

Gary M. Stolz, Ph.D., courtesy—pages 6 (*background*), 7, 10 (*top*), 12–13 (*all*), 16 (*right*), 18 (*center right*), 19, 24 (*bottom*), 35, 38 (*top left*), 43 (*both top*), 60, 70 (*bottom*), and 71 (*top*)

Gary M. Stolz, U.S. Fish and Wildlife Service, *Bugwood.org*, courtesy—page 16 (*left*)

Wikipedia.org, courtesy—pages 9 (*top center*), 17, 24 (*top*), 31, 32 (*top*), 36, 38 (*top right*), and 70 (*top*)

Wikipedia.org/Public Health Image Library, courtesy—pages 38 (*bottom*) and 41 (*top*)

All other photos and illustrations not mentioned above are the property of or are protected by the Boy Scouts of America.

Dan Bryant—page 58

Brian Payne—pages 27 (*top*), 53, and 63

Randy Piland—pages 6 (*inset*) and 48

John McDearmon—all illustrations on pages 20–21, 37, 49, and 52

MERIT BADGE LIBRARY

Though intended as an aid to Boy Scouts, Varsity Scouts, and qualified Venturers in meeting merit badge requirements, these pamphlets are of general interest and are made available by many schools and public libraries. The latest revision date of each pamphlet might not correspond with the copyright date shown below, because this list is corrected only once a year, in January. Any number of merit badge pamphlets may be revised throughout the year; others are simply reprinted until a revision becomes necessary.

If a Scout has already started working on a merit badge when a new edition for that pamphlet is introduced, *he may continue to use the same merit badge pamphlet to earn the badge and fulfill the requirements therein.* In other words, the Scout need not start all over again with the new pamphlet and possibly revised requirements.

Merit Badge Pamphlet	Year	Merit Badge Pamphlet	Year	Merit Badge Pamphlet	Year
American Business	2002	Engineering	2008	Photography	2005
American Cultures	2005	Entrepreneurship	2006	Pioneering	2006
American Heritage	2005	Environmental Science	2006	Plant Science	2005
American Labor	2006	Family Life	2005	Plumbing	2004
Animal Science	2006	Farm Mechanics	2008	Pottery	2008
Archaeology	2006	Fingerprinting	2003	Public Health	2005
Archery	2004	Fire Safety	2004	Public Speaking	2002
Architecture	2008	First Aid	2007	Pulp and Paper	2006
Art	2006	Fish and Wildlife		Radio	2008
Astronomy	2004	Management	2004	Railroading	2003
Athletics	2006	Fishing	2009	Reading	2003
Automotive Maintenance	2008	Fly-Fishing	2009	Reptile and	
Aviation	2006	Forestry	2005	Amphibian Study	2005
Backpacking	2007	Gardening	2002	Rifle Shooting	2001
Basketry	2003	Genealogy	2005	Rowing	2006
Bird Study	2005	Geology	2005	Safety	2006
Bugling (see Music)		Golf	2002	Salesmanship	2003
Camping	2005	Graphic Arts	2006	Scholarship	2004
Canoeing	2004	Hiking	2007	Scuba Diving	2009
Chemistry	2004	Home Repairs	2009	Sculpture	2007
Cinematography	2008	Horsemanship	2003	Shotgun Shooting	2005
Citizenship in the		Indian Lore	2008	Skating	2005
Community	2005	Insect Study	2008	Small-Boat Sailing	2004
Citizenship in the Nation	2005	Journalism	2006	Snow Sports	2007
Citizenship in the World	2005	Landscape Architecture	2008	Soil and Water	
Climbing	2006	Law	2003	Conservation	2004
Coin Collecting	2008	Leatherwork	2002	Space Exploration	2004
Collections	2008	Lifesaving	2008	Sports	2006
Communication	2009	Mammal Study	2003	Stamp Collecting	2007
Composite Materials	2006	Medicine	2009	Surveying	2004
Computers	2009	Metalwork	2007	Swimming	2008
Cooking	2007	Model Design and Building	2003	Textile	2003
Crime Prevention	2005	Motorboating	2008	Theater	2005
Cycling	2003	Music and Bugling	2003	Traffic Safety	2006
Dentistry	2006	Nature	2003	Truck Transportation	2005
Disabilities Awareness	2005	Nuclear Science	2004	Veterinary Medicine	2005
Dog Care	2003	Oceanography	2009	Water Sports	2007
Drafting	2008	Orienteering	2003	Weather	2006
Electricity	2004	Painting	2008	Whitewater	2005
Electronics	2004	Personal Fitness	2006	Wilderness Survival	2007
Emergency Preparedness	2008	Personal Management	2003	Wood Carving	2006
Energy	2005	Pets	2003	Woodwork	2003

BOY SCOUTS OF AMERICA • SUPPLY GROUP

NATIONAL DISTRIBUTION CENTER

2109 Westinghouse Boulevard
P.O. Box 7143
Charlotte, NC 28241-7143

www.scoutstuff.org

DIRECT MAIL CENTER

P.O. Box 909
Pineville, NC 28134-0909

For fast credit card orders—

VISA, MasterCard, American Express—
call BSA operators toll-free
1-800-323-0732



FLORIDA SEA BASE



PHILMONT SCOUT RANCH



NORTHERN TIER



EAGLE SCOUT

ON THE ROAD TO HIGH ADVENTURE

THE SUPPLY GROUP IS
READY TO BE A PARTNER
ON YOUR TRAIL TO
EAGLE THROUGH HIGH
ADVENTURE. THE
ADVENTURE IS YOURS,
AND WE ARE READY
WITH THE GEAR YOU
WILL NEED. YOU CAN
DEPEND ON THE LATEST
IN LIGHTWEIGHT,
DURABLE, QUALITY
GEAR THAT WILL
MEET AND SURPASS
YOUR TOUGHEST
REQUIREMENTS.



WWW.SCOUTSTUFF.ORG

SKU 35941



35941

2010 Printing