

Welcome
to



Guest Services Directory

West Parry
Sound District

Parry Sound

276 Rankin Lake Rd. • Parry Sound, ON P2A 2W8

705-378-2721 • Reservations 800-562-2681

parrysoundkoa@gmail.com

GPS Directions: Input Seguin, ON as city

visit

parrysound**koa**.com

twitter



check out
our Website!



There's camping. And there's KOA.

Your Hosts: Don, Michelle & Family Welcome You!



Things to See & Do!

Aspen Visit this safe and caring place for injured and orphaned wildlife and see how the dedicated staff **helps over 1,000 animals each year.** Rehabilitation and return to the wild is the goal, but some animals live here permanently. See birds, raccoons, bears, deer, beavers and more. Open Wednesday and Sunday 1pm-4pm between the May long weekend and Thanksgiving weekend. Admission is by donation. Located in Rosseau; 15 miles east of Parry Sound. aspenvalleywildlifesanctuary.com

Parry Sound ATV District Club Come on out the 2nd Tuesday of every month and enjoy some down home camaraderie. Swap stories, make friends and plan upcoming events including the famous ATV Spring Jam held every end of April. Participate in a ride almost every month of the year. More info at psatv.ca

WEST PARRY SOUND DISTRICT MUSEUM- Explore the rich and varied history of the Parry Sound area at this amazing museum! Wander the galleries, view the exhibits (new ones every two months!), picnic in the park, enjoy the gardens and climb to the top of the 96-foot observation tower for breathtaking views. Open daily 9am - 7 pm July & August then September 1- June 30, Tuesday-Friday 9am - 5 pm, Saturday 10am-2pm. Admission is \$2 adults, \$1 children, lookout tower climb is FREE. wpsdm.com

Island Queen- Experience the unbelievable beauty of this remote 30,000 islands region of Georgian Bay with a trip aboard the 550 passenger Island Queen. Sail past glacier-sculpted islands and windswept forests. The ship has large viewing windows and observation decks; **don't forget your camera!** Enjoy either a 2-hour morning inner island cruise or a 3-hour afternoon outer island wilderness cruise. Cruises are daily from June 1-Thanksgiving Monday from town dock. Admission is charged. We sell tickets here at the KOA for the same price.

Canada Day in Parry Sound visit the waterfront to celebrate Canada's Birthday. Enjoy the Fireworks display over Georgian Bay at dusk. See parrysoundchamber.ca for schedule of events.

SPORTS

- Basketball • Playgrounds • Ping Pong • Mini Golf \$
- Trampoline • Badminton & Volleyball
- Horseshoes • Soccer • Canoe rentals \$
- Pool heated • Games to sign out at office

TRAILS- The region offers a trail for every season and every outdoor experience such as biking, hiking, ATVing, horseback riding, Nordic skiing, and snowmobiling. The backbone of the system is the Park-To-Park Trail, a regional initiative to create an east-west link through the districts of Parry Sound, Muskoka and Haliburton County. Connecting Killbear Provincial Park to Algonquin Provincial Park, this **230-kilometre length of trail** is a destination for all trail-enthusiasts. A celebrated feature of the Park-To-Park Trail is the Precambrian geology of the Canadian Shield. The trail cuts laterally across the southern extent of the Shield exposing the glacially scarred granite bedrock. A multi-use trail system that will link area attractions, services, amenities and other trail networks such as the Trans Canada Trail will be produced. This will then provide a seamless trail system encompassing, snowmobile routes, community trails historic colonization and logging roads, former rail beds, new links and some secondary roads.

For a more urban yet natural, experience, a waterfront fitness trail in the Town of Parry Sound links public beaches and boat launches with restaurants and marinas, the Charles W. Stoekey Centre for the Performing Arts/ Bobby Orr Hall of Fame and the Museum on Tower Hill. For info click parktoparktrail.com

Santa's Village- Visit Santa's summer retreat, « where kids are elves for a day! » See Santa's farm and feed the deer, ride the Candy Cane Express train, enjoy carnival rides and **meet with Santa and Mrs. Claus!** Located in Bracebridge; 30 miles southeast of Parry Sound. Open Daily 10am-6pm from June 20-Labour Day and Sept. 12th and 13th. Admission is charged santasvillage.ca

Bobby Orr Hall of Fame- Celebrate Bobby Orr's outstanding hockey career! Learn about his fearlessness on the ice and how he changed the game. Visit the Trophy Room and the Coaches Corner; test your skills and knowledge in the interactive exhibits. Open daily 10am-6pm from Canada Day to Labour Day, 9am-5pm Tues-Sat Spring and Fall. Admission is charged. Located in Parry Sound at waterfront. bobbyorrrhalloffame.com

EMERGENCY NUMBERS

Fire/Ambulance/Police **911** West Parry Sound Hospital
Poison Control 6 Albert St.
1-800-268-9017 **705-746-9321**

GPS N 45.29849776 W 079.9063968
276 Rankin Lake Rd., Seguin, ON P2A 2W8

Everything we have for a great stay

- Kabins - 1 & 2 room
- NEW: Lodges (fully equipt)
- Large Pull thrus
- 15, 30 & 50 amp service
- Wireless Internet available FREE (Wi-Fi)
- Wooded, secluded & open sites
- Electric and water serviced RV & tent sites
- Mobile pump-outs & dump station
- Wagon rides
- Clean washrooms & hot showers
- Heated pool, trampoline and mini-golf \$
- Laundry room
- Grocery store, Canadian boutique
- Candy, ice cream & bait
- Firewood (delivery included) and ice
- Recreation hall, planned activities
- Themed weekends- NEW (check website for details)
- Golf courses nearby
- 2 sandy beaches & free boat launch nearby
- 30,000 Islands Cruise tickets (same price as at dock)

TELEVISION

LOCAL CHANNELS

2 CTV	11 CTV
3 CKVR	13 TVO
7 GLOBAL	62 CHCH
8 CBC	

BELL EXPRESS Vu

AZ 206 EL 36

DIRECT TV

AZ 221 EL 36

STAR CHOICE

A AZ 227	EL 31.2	SK 115
B AZ 231	EL 31.2	SK 115

FOR YOUR SAFETY & COMFORT

Please help us provide an enjoyable experience for all of our camping guests by observing the following rules and procedures:

Checkout time is 11am. If you wish to extend your stay & we hope you do, please re-register by 10am. A late departure time can be arranged for a nominal fee. Both are subject to availability.

Quiet Hours are from 11pm to 8am please be considerate of your fellow campers. Alcoholic beverages must be kept at your site.

Pets Welcome! But please observe proper pet etiquette including no longer than 6-foot leashes, poop'n scoop, do not leave pets unattended. See "piddle parlour" for dog walk or "kamp K-9" for leash free zone on site map.

Visitors Must (for Security and insurance reasons) register at office before entering Campground. A fee is required, Visitors please park at the front office and leave the premises by 10pm. Extra car \$ may apply.

Speed Limit in our Campground is **10KM/hr**. This is strictly enforced. Please drive carefully as children are playing.

Swimming pool - NO lifeguard on duty & swimming at your own risk, rules posted at pool, open daily 10am-9pm Children must be accompanied by an adult/guardian when using the washrooms, pool, trampoline & playgrounds.

Recycling located in blue box near dumpsters. Liquor & beer empties greatly accepted and donated to **KOA Care Camps**- cancer camp for children.

Fires are never to be left unattended. Extinguish fires before bedtime or leaving. Grills available at office with a deposit.

No trash in the fire rings please. This is unsightly and invites wildlife into the Campground.

Absolutely No taking of wood or brush out of the forest. Our trees are precious and beautiful . . . for all of us to enjoy. NO outside wood please. A recent insect infestation could endanger our healthy northern forests. Wood may be purchased at the store.

No Rope Clotheslines are permitted, due to their posing a danger to children in the nighttime.

Washrooms are closed at posted times for cleaning. Please observe these times, as we are cleaning for you. Please do not wash dishes or clothes in restroom sinks. Camper sink is available for dishes ONLY.

NO RV or car washing on the grounds, as we use well water & can't waste it.

Please No electric bug zappers or generators at any time. It is not courteous.

NO ATV, motorbike or bicycle riding after dark. Insurance and ownership required in order to ride any trails-no exceptions. Motorbikes are to be pushed to the trails edge and then started. Upon return, they are to be pushed to your site. ATV/Motorbikes are to go directly to and from the trails and are NOT to be ridden around the Campground.

Management assumes no responsibility for accidents, damages, theft or injury from any cause.

Check out Time

11:00 AM

Wi-Fi Code

by Georgian Bay Software

4121724857

To Tim Horton's ↗

TRANS-CANADA / SEGUIN TRAIL

BRIDGE

BEAR RIDGE PASS

WARBLER WOODS

BEAVER POND TRAIL

BEAVER POND



MAP NOT To SCALE

Your Hosts: Don & Michelle

Please help prevent the spread of the Emerald Ash Bore -

PLEASE NO outside firewood.

NO GARBAGE IN FIREPITS

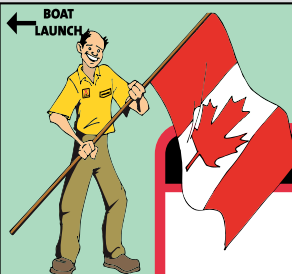
Please adhere to the speed limits -
Bike and ATV rules enforced.



← To Parry Sound

Rankin Lake Road

To Toronto



YOUR SITE #

LEGEND

- | | | | |
|----------------|------------------|----------------|----------------|
| 15 AMP | KAMPING KABIN® | KAMPING LODGE® | WATER TAPS |
| 30 AMP | LAUNDRY | TRAMPOLINE | PROPANE |
| 50 AMP | PHONE | HORSESHOES | DUMPSTER |
| TENT SITE | WOMEN'S WASHROOM | MINI GOLF | DUMP STATION |
| RENTAL TRAILER | MEN'S WASHROOM | POOL | PIDDLE PARLOUR |
| | CAMPER SINK | | |



It's a beautiful thing.



1 Location
2 Great Choices!

121 Bowes Street
Parry Sound

705-746-1011

SWISS CHALET
ROTISSERIE & GRILL

Family Happens
at Swiss Chalet



2



SOMEWHERE IN TIME

A great selection of memorabilia,
Coke items, crystal, glassware & gift ideas

705-746-5286

32 Sequin Parry Sound

Sandy Plains Variety

705-732-2898



The Beer Store
Retail Partner

"Your Friendly Neighborhood Convenience Store"

7 KM from the KOA

- Propane Exchange
- ATM
- Grocery, Snacks, Pop
- Leadbetter Meats
- Fishing Access and Worms
- Movies

3

Sandy Plains Road, Humphrey N45 17.027 W79 48.955

Georgian Small Engines

80 Parry Sound Drive
705-746-8816

STIHL



ATV's
Power Equipment
Lawn & Garden
Sales, Service & Parts

We Sell the Best and Service the Rest!

5



Go Camping with us at
our Neighbouring KOA's

6



7

R.R. 2, 3 Lake Ave. • Parry Sound
705-378-2893

SALES • PARTS & SERVICE

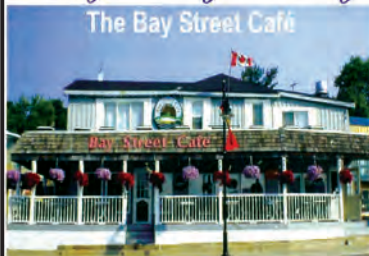
STORAGE • BOAT TAXI • BAIT & TACKLE

RENTALS:

- Seadoo • Bowriders • Pontoon Boats
- Canoe/Kayak • Paddle Boats

WWW.OTTERLAKEMARINE.INFO

Come join us by the Bay
The Bay Street Café



705-746-2882

Fax: 705-746-5205

Serving Lunch & Dinner
Dining Room & Heated Patio
Take Out
Fabulous Wine & Martini Menu
Check the
Campground Office
for Menus

8

22 Bay Street

1116 Crawford St.
Rosseau, ON



9

**Aspen Valley
Wildlife Sanctuary**

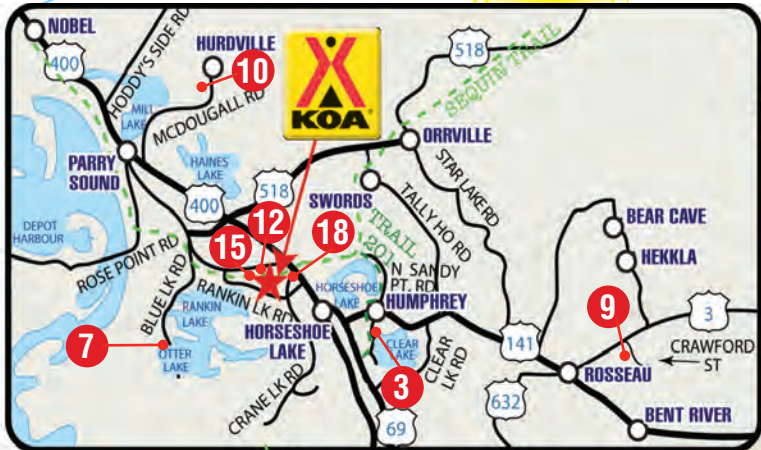
HOURS

Wednesday & Sunday: 1 pm - 4 pm

(705) 732-6368

info@avws.ca

www.aspenvalleywildlifesanctuary.com





An **Inukshuk** is a human-like figure made of stacked stones. The Inuit used these as a marker to find their way when traveling.

10

Deer Run Golf Course

18 Hole Golf Course

Snack/Bar/Lounge (LLBO)

705-746-GOLF (4653)

www.deerrunparrysound.com

2ND PERSON PAYS

1/2 PRICE

on Green Fees with this Coupon

PARRY SOUND RV.ca

705-746-0608



Corner Pine and Bowes
Parry Sound

- Mobile Service
- Large Parts Selection
- Full Service Shop
- Insured for Towing
- Storage
- Consignment

11

KOA CARE CAMPS



Are a non profit program that helps children stricken with cancer & their siblings participate in the kamping experience which focuses on fun and friends instead of their illness.

Currently, **KOA** sponsors 45 camps throughout Canada and the US. Support from people like you keeps the **KOA** Care Camps program going here at **Parry Sound KOA** and ALL of your donations will ensure that the dreams of sick children will become possible. **Thanks For Caring.**



12



Dine In or Take-Out

705-746-8992

- Light Meals
- Fresh Baked Breads
- Gluten Free Bread
- Fair Trade Coffees
- Vegetarian Selections
- Desserts
- Ice Cream

35 Seguin Street • Parry Sound

13



Georgian Bay Software

Your Computer & Networking Specialists!



~ Laptop & Desktop Sales, Service & Accessories

~ On-site or In-store Service & Repairs

~ Serving the Parry Sound Area for over 17 years

42 Gibson Street, Parry Sound (705) 746-6943



14



www.ppmpps.ca

(705) 746-4720

Paul's Fishing Charters - Inland Lakes

Parry Sound

Bass, Pike, Walleye, Crappie

Email: paul@ppmpps.ca

15

our Annual
Christmas in July



16

Walmart

Save money. Live better.

Supplying your camping experience
with equipment, clothing,
(those things you forgot)
and a full line grocery!

705-746-1573

1 Pine Drive

Parry Sound

MANY GUESTS AT PARRY SOUND KoA ENJOY THE EXPANSIVE TRAILS ATTACHED TO THE PARK.

Drive Safe and respect other users, private property and nature!

Trail Links and Connections

The Park-To-Park Trail is made up of a patch work of already existing or once established trail systems. The 230 km route connects a variety of community trails, historic colonization roads, former rail beds, logging roads, snowmobile trails, informal trails, new links, and where necessary secondary roadways or cottage roads. Accordingly, the trail is classed as a multi-use system with certain areas highlighted to best suit individual trail activities. The Trans Canada Trail and the Sequin Recreational Trail are very important links in the Park-To-Park Trail, essentially providing the spine for the route. The Park-To-Park Trail provides linkages and connections to other formal trail systems in other districts.



Thanks for Escaping to the Parry Sound KoA

Our "yellow shirts" will ensure your trip is full of "forever memories", so don't hesitate to stop one of us if there is anything you need. Enjoy your stay with us and may your path lead to our door again ... hopefully sooner than later.

Safe Journey ...

Your Parry Sound KoA team



17

Jewellers

PARRY SOUND MALL

Climate Controlled • Free Parking
Food Court

Hart • RBC • PD Murphy • Ardène
• Staples Express

Mall Gift Certificates,
Complimentary Stroller
and Wheelchair Loans
OUTDOOR TERRACE

Parry Sound's Shopping Centre for the entire family

**PROPERTY
MANAGED BY**
We have Real Estate Agents! Call
1-800-451-5239
JAMES DREW 705-790-1587

Customer Care: 705-746-9252
Email: parrysoundmall@bellnet.ca
www.parrysoundmall.ca

Bear Claw Tours
GEORGIAN BAY'S ULTIMATE ADVENTURE

**GUIDED
ATV
TOURS**

18

bearclawtours.com 705.746.9481
all equipment provided

